



6000

VINYL HORIZONTAL SLIDER WINDOW



800.475.5061 | gerkin.com

# 6000

## VINYL HORIZONTAL SLIDER WINDOW

### DECADES OF PROVEN PERFORMANCE

Gerkin has long been known for building the best sliding windows on the market! With our long history in building this style window, we have perfected the performance of this window to the envy of our competition! The 6000 slider is tighter than many of our competitor's best performing casement style windows!

No other style window can offer the overall value in performance and cost like the 6000 slider. The 6000 slider is our most value priced window, while offering terrific performance with an incredibly low .04 air infiltration rate. The 6500 window compliments the 6000 slider as a stand alone fixed window or can be used to mull fixed and specialty shapes in order to create custom configurations.

We have meticulously designed this window to work with unmatched performance under extreme conditions. We have multiple chambers of vinyl along with areas of extruded aluminum reinforcement and double strength glass. This window really shows its strength and performance under the harshest of conditions.



# 6000

## VINYL HORIZONTAL SLIDER WINDOW

### 6000 HORIZONTAL SLIDER | FEATURES

This stylish 2 1/2" slimline design has a beveled frame profile, fusion welded sash and frame corners and twin weather seals. The 6000 glides easily on two sets of tandem rollers and closes into a fully interlocked frame. If you're looking for a terrific appearance, great performance, easy operation and low maintenance all at a very reasonable cost, the 6000 slider is a great choice!

**Double Weatherstripping:**

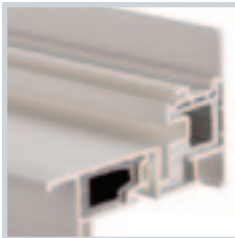
Twin fin-seal weatherstripping provides a single fin seal on the sash sealing the exterior and a single fin-seal in the frame sealing the interior.

**Interlock:**

The 6000 has a full interlock with fin seal weatherstripping at the meeting rail providing a positive seal.

**Hardware:**

The 6000 operates on two sets of smooth rolling tandem nylon rollers. The sash pull rail is an integral part of the sash frame. The sash locks into an aluminum stiffened meeting rail.

**Aluminum Reinforced Sash:**

Gerkin reinforces the interlock rail of the sash and frame with extruded aluminum in order to reduce deflection and produce better overall window ratings.

**Weep System:**

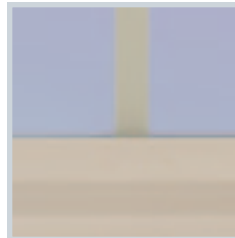
We utilize a staggered sill weep system with flush weep covers. This design provides excellent water drainage and air infiltration performance.

**Extruded Screen:**

Gerkin offers more strength in its screen frame in order to achieve greater screen durability. The screen is removable without removing the sash.

**Frame:**

2 1/2" frame depth and a slimline beveled frame design provide strength, beauty, and easy installation. Our frame and sash are fully fusion welded extruded UPVC.

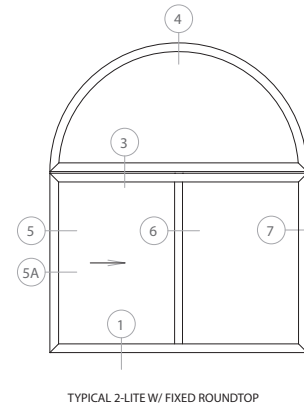
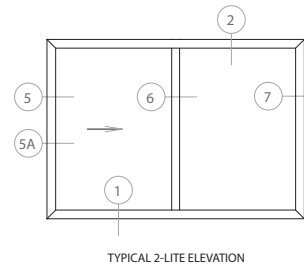
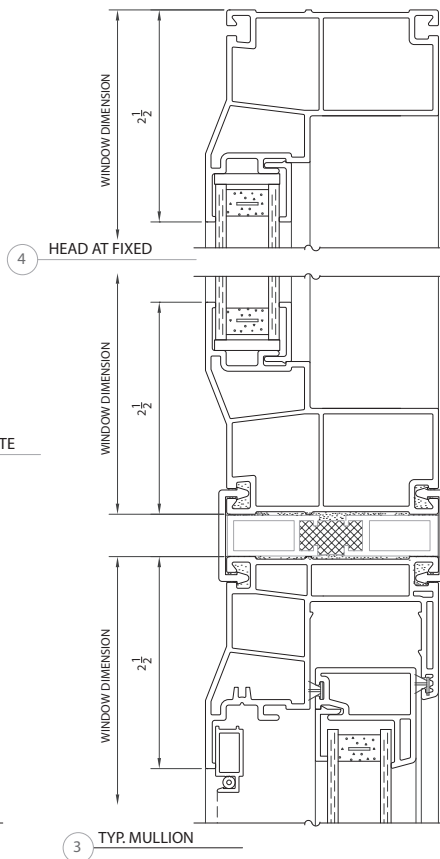
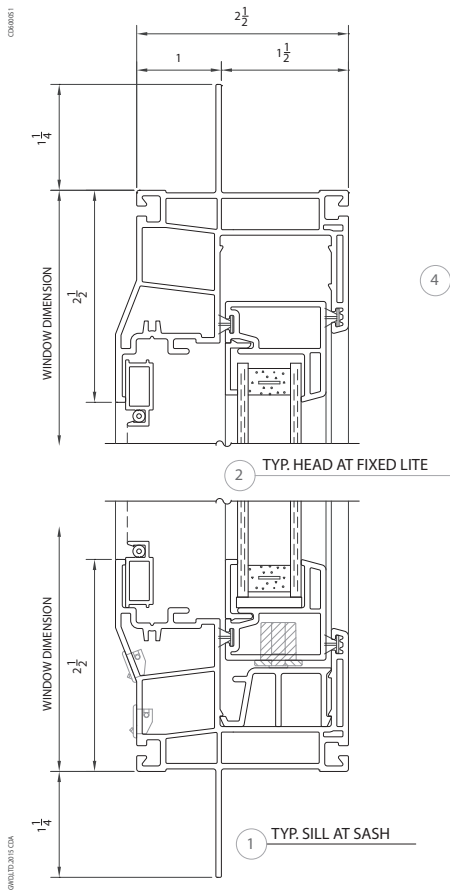
**Outside Glazed Sash:**

The exterior glazing on the sash gives a smooth inside appearance. The fixed portion of the slider is glazed on the interior for easier glass replacement.

# 6000

## VINYL HORIZONTAL SLIDER WINDOW

### 6000 HORIZONTAL SLIDER | DETAILS



SHEET NO: 1

6000 SERIES HORIZONTAL SLIDING WINDOW

GERKIN WINDOWS & DOORS RESERVES THE RIGHT TO CHANGE OR DISCONTINUE MANUFACTURING ANY OF ITS STANDARD WINDOW SYSTEMS OR COMPONENTS WITHOUT PRIOR WRITTEN NOTICE.



# 6000

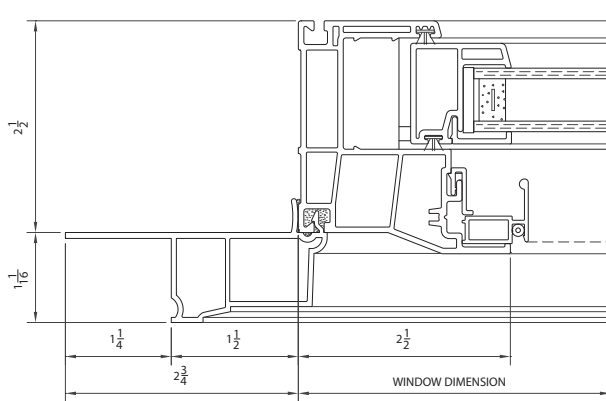
## VINYL HORIZONTAL SLIDER WINDOW

### 6000 HORIZONTAL SLIDER | DETAILS

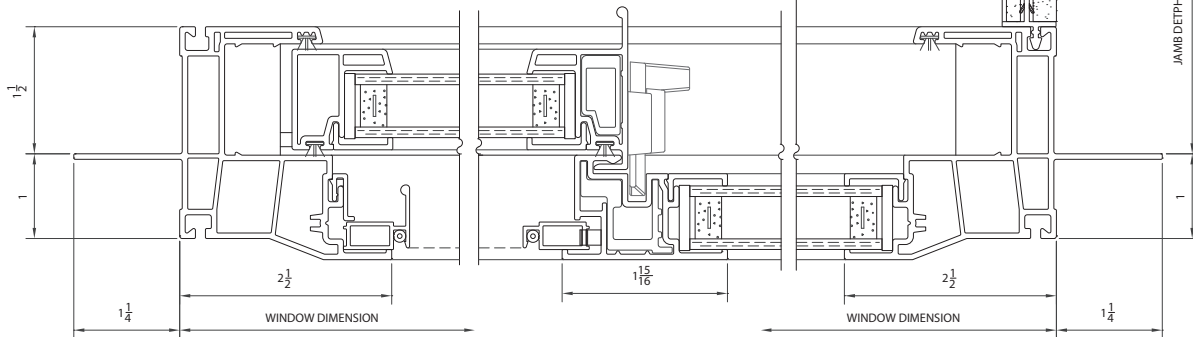
SHEET NO:

2

6000 SERIES HORIZONTAL SLIDING WINDOW



5A JAMB AT SASH w/  
OPTIONAL BRICKMOULD



5 JAMB AT SASH

6 MEETING RAIL

7 JAMB AT FIXED LITE WITH  
OPTIONAL EXTENSION JAMB

JAMB DEPTH (VARIES)



# 6000

## VINYL HORIZONTAL SLIDER WINDOW



### 6000 HORIZONTAL SLIDER | TEST RESULTS

NFRC   TEST RESULTS	
U-Value	.29
Solar Heat Gain Coefficient	.22
U-Value / Air Only* 6000, 6500	33, .32
Visible Light Transmittance	.51
Condensation Resistance	60

AAMA   TEST RESULTS	
<b>Test Window   3 Equal Lite 108" X 54"</b>	
Air Infiltration	.05 cfm/sq.ft.
Water	5.43 psf
Structural	52.5 psf
Indoor/Outdoor Sound Transmission Class	28
Sound Transmission Class (w/ 1/4 LAM X 1/8 A)	32
AAMA Rating	R-PG35-HS

AAMA   TEST RESULTS	
<b>Test Window   2 Equal Lite 72" X 60"</b>	
Air Infiltration	.04 cfm/sq.ft.
Water	5.43 psf
Structural	52.5 psf
Indoor/Outdoor Sound Transmission Class	28
Sound Transmission Class (w/ 1/4 LAM X 1/8 A)	32
AAMA Rating	LC-PG35-HS



\*U-Values for our windows with 1/8" 366 LoE<sup>3</sup> glass, air only, 1/8" clear glass, no muntins or argon in the air space.

"Thermal Value w/ 3/4" IGU w/ 1/8" 366/Argon/ 1/8" Clear - No Muntins

Tested and Certified to AAMA/WDMA/CSA 101/I.S.2/A440-05 & A440-08 U-Value/SHGC/VT/CRF Tested to NFRC 100/200/500



800.475.5061 | gerkin.com