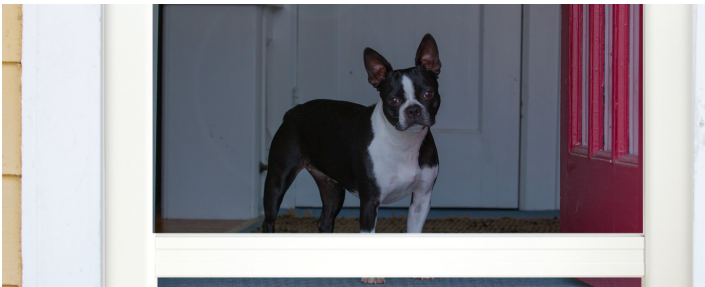




CLASSIC

ALUMINUM STORM DOORS



800.475.5061 | gerkin.com

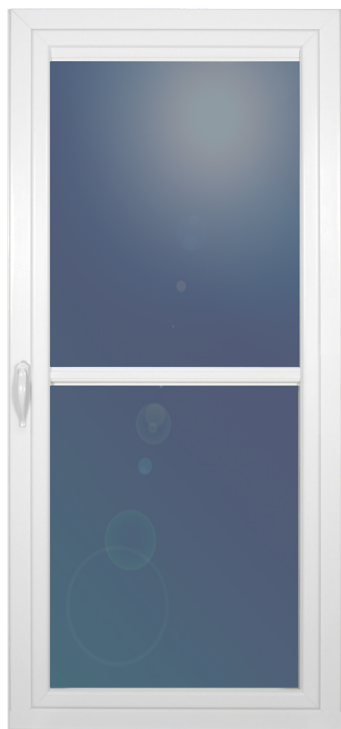
CLASSIC

ALUMINUM STORM DOORS

DECADES OF PROVEN PERFORMANCE

The Classic Series door line features our best selling storm doors, using the most popular combinations of models, colors and hardware.

Classic offers everything you would expect for a premium storm door. No matter what price range or home style you might have, Classic offers the right mix. All Classic Series doors are available and in stock for a quick delivery.



Model 8C9A

- Full-view
- Retractable screen
- Built-in balances offer an easy-to-operate sash
- Heavy duty 1-3/4" extruded mainframe
- Heavy weatherstripping overlaps for a tight seal
- Stylish, ergonomically friendly handle looks and feels great
- Available in White 36" x 81"
- All hardware is color-matched to the door



Model 9C1A

- Self-storing high-view
- Convenient self-storing ventilation; no glass to store
- Aluminum clad polyethylene core kick panel withstands years of daily use
- Stylish ergonomically friendly handle looks and feels great
- Heavy-duty extruded mainframe for long trouble-free life
- Available in White or Bronze, 32" and 36"
- All hardware is color-matched to the door



Model 9C2A

- Self-storing mid-view
- Convenient self-storing ventilation; no glass to store
- Large glass/screen area provides light and ventilation
- Aluminum clad polyethylene core kick panel withstands years of daily use
- Stylish, ergonomically friendly handle looks and feels great
- Heavy-duty extruded mainframe for long trouble-free life
- Available in White or Bronze, 30", 32" and 36"
- All hardware is color-matched to the door

CLASSIC

ALUMINUM STORM DOORS

DECADES OF PROVEN PERFORMANCE

The right storm door can take any home from ordinary to beautiful. That's why we offer a wide selection of doors for every home style.

Classic doors are our five most popular models and are offered in three colors with our most popular hardware. These doors are in stock and ready to ship for quick delivery.



Model 9C4A

- Full-view; enhances entry
- Stylish, ergonomically friendly handle looks and feels great
- Comes with heavy-duty screen
- Heavy extruded frame will last a lifetime
- Available in White or Bronze, 32" and 36"
- All hardware is color-matched to the door



Model 9C5A

- Lower Vented Full-view
- Full-view design enhances entry; vent reduces heat build-up
- Stylish, ergonomically friendly handle looks and feels great
- Heavy extruded frame will last a lifetime
- Available in White, Bronze and Sandstone 32" and 36"
- All hardware is color-matched to the door

CLASSIC

ALUMINUM STORM DOORS

CLASSIC | FEATURES

Gerkin Windows and Doors has been building storm doors for over 60 years. Our experience tells us that many companies try to build a door that fits a particular price point while forgetting about quality and value.

We will never compromise our product quality or value for a price point. Our doors are offered by independent dealers and distributors that appreciate unmatched quality and customer-friendly choices in door styles, hardware and accessories.

Gerkin offers three storm door categories:

Classic, Uniquely Yours and Cabrio. All of our doors are guaranteed for as long as you own your home.



Lifetime Hinges:

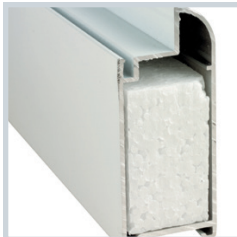
Our self-lubricating hinges are made from extruded aluminum and have an exclusive lock-in feature.



Aluminum Clad,

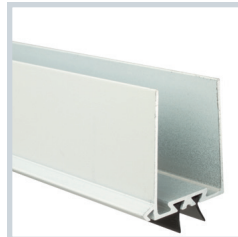
Polyethylene Core Kick Panels:

Our kick panels are built "kid tough" to withstand years of daily use.



Foam Insulated Frame:

Heavy duty, smooth aluminum with baked-on enamel finish is foam insulated for better energy efficiency. (Not available on 8C9A)



Adjustable Sill Expander:

Two flexible sweeps and our sloped design expander provide a tight seal at the threshold.



Concealed Installation Screws:

All Gerkin doors come with z-bar screw covers. This ensures a clean and finished appearance from the outside.



Deep Wool Pile Weatherstripping:

This excellent weatherstripping seals out the elements at the head and jams.



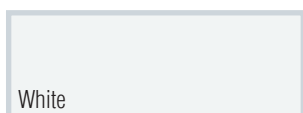
Corner Gusset:

Engineered extruded aluminum corner gussets are used for maximum strength against twist and sag.

CLASSIC

ALUMINUM STORM DOORS

CLASSIC | COLORS & HARDWARE



Available Colors:

White, Sandstone & Bronze.

(See models for color availability).



Dakota Painted:

Color matched to the door.