



Gerkin Windows & Doors

P.O Box 3203

Sioux City IA. 51102

Phone: (402) 494-6000 (800) 475-5061

Fax: (402) 494-6765

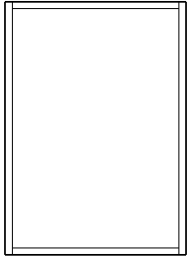
Web site: www.gerkin.com E-Mail: gerkin@gerkin.com



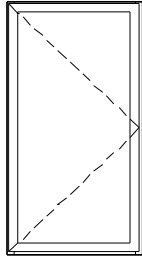
Rhino series thermally broken 2 3/8" aluminum windows Information book

- Page RC1 Sizing guidelines for 1-lite openings (All Rhino Windows)
- Page RC2 Sizing guidelines for multiple lites in 1 frame (Awning, casement, fixed & hoppers)
- Page RC3 Sizing guidelines for multiple lite openings side-stacked with no structural mullions (Awning, casement, fixed & hoppers)
- Page RC4 Sizing guidelines for multiple lite openings side-stacked with structural mullions (Awning, casement, fixed & hoppers)
- Page RC5 Sizing guidelines for multiple sliders side-stacking (Rhino sliding windows)
- Page RC6 Sizing guidelines for sliders with head-staking (Rhino sliding windows)
- Page RC7 Sizing guidelines for multiple singlehung side-stacking (Rhino singlehung windows)
- Page RC8 Sizing guidelines for singlehung with head-staking (Rhino singlehung windows)
- Page RC9 Accessories Gerkin panning system (All Rhino windows)
- Page RC10 Accessories Gerkin subframe system (All Rhino windows)
- Page RC11 Accessories Miscellaneous pieces (All Rhino windows)

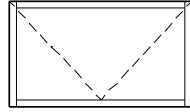




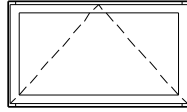
5500
FIXED



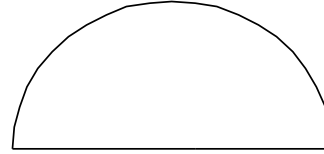
5300
CASEMENT



5200
HOPPER



5100
AWNING



5700
1/2 ROUND

5500 FIXED

72" X 72" MAX. CERTIFIED R.O
12 3/4" X 12 3/4" MIN. R.O

5700 1/2 ROUND FIXED

72" X 36" MAX. R.O
24" X 12" MIN. RO.

5300 CASEMENT

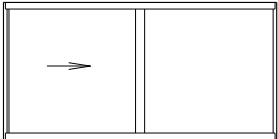
36" X 72" MAX. CERTIFIED RO.
15 3/4" X 21 3/4" MIN. RO. W/ROTO HARDWARE 13 1/4" X 21 3/4" MIN. RO. W/PUSH/PULL HARDWARE

5200 HOPPER

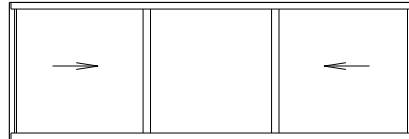
61 1/2" X 33 1/2" MAX. CERTIFIED, MAX. NOT CERTIFIED RO. 60" X 36" OR 47" X 45"
13 1/4" X 13 1/4" MIN. RO.

5100 AWNING

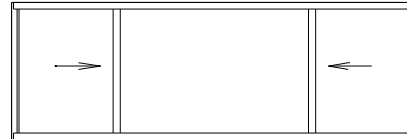
61 1/2" X 33 1/2" MAX. CERTIFIED, MAX. NOT CERTIFIED RO. 60" X 36" OR 47" X 45"
21 3/4" X 17 1/2" MIN. R.O W/ROTO HARWARE 13 1/4" X 17 1/2" MIN. RO. W/PUSH/PULL HARWARE



5000 2-LITE SLIDER



5000 3-EQUAL LITE SLIDER



5000 3-LITE PICTURE SLIDER

ALUMINUM 2-LITE SLIDERS

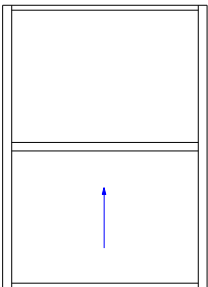
5045 104" X 72" MAX. CERTIFIED (LC-30) R.O,
5045 80" X 64" MAX. CERTIFIED (LC-45) R.O,
18 3/4" X 12 3/4" MIN R.O

ALUMINUM 3- EQUAL LITE SLIDERS

5045 156" X 72" MAX. CERTIFIED (LC30) R.O
5045 120" X 64" MAX. CERTIFIED (LC-45) R.O

ALUMINUM 3-LITE PICTURE SLIDERS

5045 104" X 72" MAX. CERTIFIED R.O, 120" X 72" OR 132" X 60" MAX. NOT CERTIFIED (LC-30)
5045 104" X 64" MAX. CERTIFIED R.O, 120" X 72" OR 132" X 60" MAX. NOT CERTIFIED (LC-45)



5900 SINGLEHUNG

5900 SINGLEHUNG

54" X 90" MAX. CERTIFIED R.O
16 1/2" X 30" MIN R.O

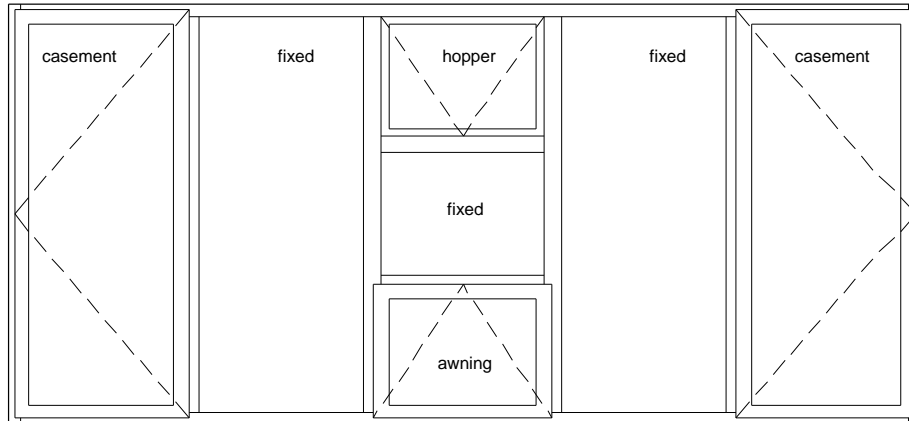


One frame window with multiple configurations

Awning , Casement, Fixed & Hoppers

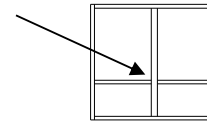


Gerkin Aluminum thermally broken commercial windows with 2 3/8" frame depth. Can be glazed 1" units. Standard colors available: clear anodized, dark bronze anodized, white painted or bronze painted. Custom colors are available upon request.



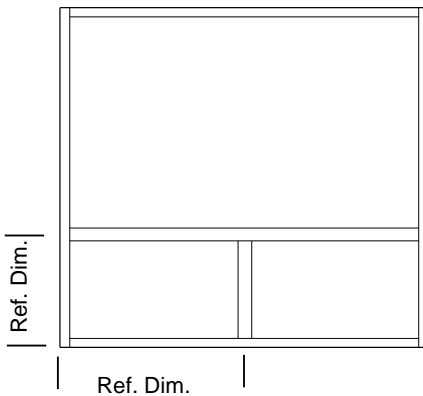
There are many different configurations that can be used in the Gerkin stand alone system. When choosing your configuration you must use the following guidelines.

1. The rails can not be crossed in a 1 frame configuration



2. Maximum rough opening can not exceed 144" width X 72" height or 72" width X 144" height

3. Reference dimensions must conform to the following:



	max size	min size roto	min size push / pull
5100 Awning	60" x 30"	21" x 17 1/2"	12 1/2" x 17 1/2"
5200 Hopper	60" x 30"	N/A	12 1/2" X 12 1/2"
5300 Casement	36" x 72"	15" x 21 3/4"	12 1/2" x 21 3/4"
5500 Fixed	48" x 72"	N/A	12 1/2" x 12 1/2"



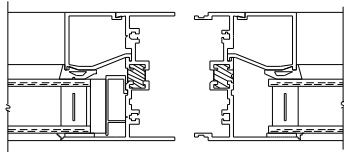
Side-stack configurations with no structural mull

Awning , Casement, Fixed & Hoppers

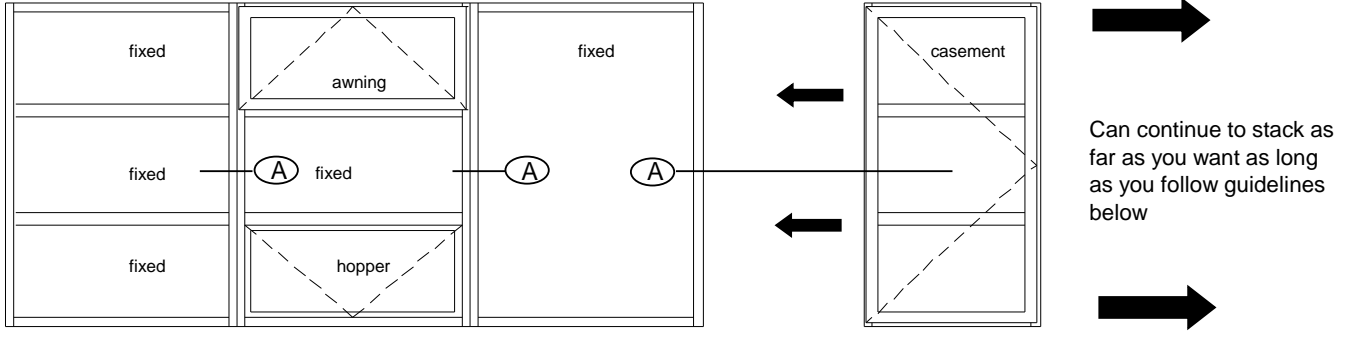


Gerkin Aluminum thermally broken commercial windows with 2 3/8" frame depth. Can be glazed with 1" units. Standard colors available: clear anodized, dark bronze anodized, white painted or bronze painted. Custom colors are available upon request.

Caulk interior & exterior leg of stack rail



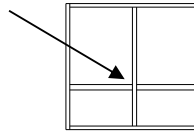
Rhino seri Stacking detail



Can continue to stack as far as you want as long as you follow guidelines below

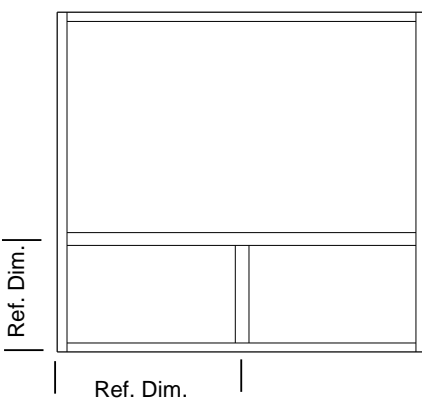
There are many different configurations that can be used in the Gerkin side stack system. When choosing your configuration you must use the following guidelines.

1. The rails can not be crossed in a 1 frame configuration



2. Individual frame cannot exceed 48" wide X 72" tall

3. Reference dimension must conform to the following:



	max size	min size roto	min size push / pull
5100 Awning	48" x 30"	21" x 17 1/2"	12 1/2" x 17 1/2"
5200 Hopper	48" x 30"	N/A	12 1/2" x 12 1/2"
5300 Casement	36" x 72"	15" x 21 3/4"	12 1/2" x 21 3/4"
5500 Fixed	48" x 72"	N/A	12 1/2" x 12 1/2"



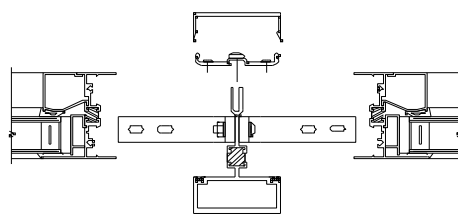
Side-stack configurations with structural mull

Awning , Casement, Fixed & Hoppers



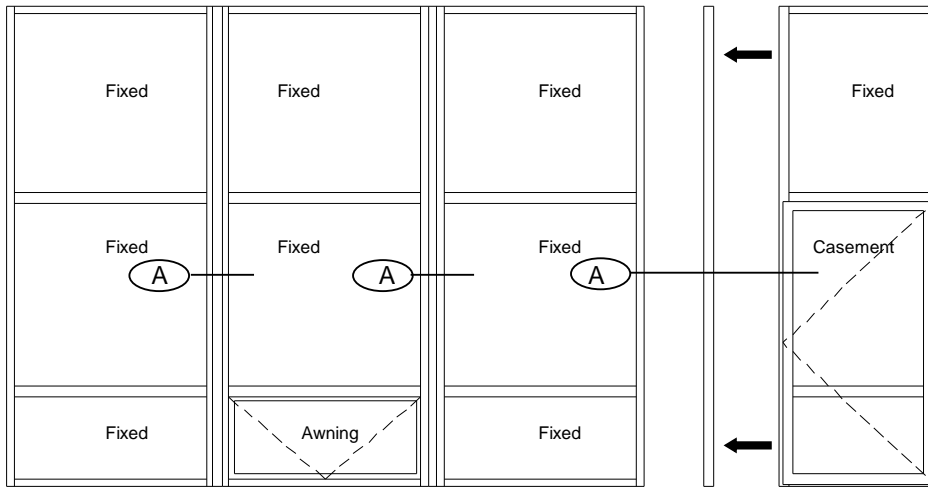
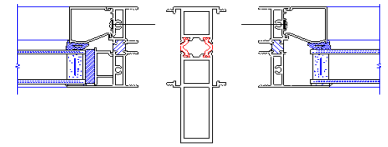
Gerkin Aluminum thermally broken commercial windows with 2 3/8" frame depth. Can be glazed with 1" units. Standard colors available: clear anodized, dark bronze anodized, white painted or bronze painted. Custom colors are available upon request. **3 piece mull**

Caulk interior & exterior full length of structural mullin



A

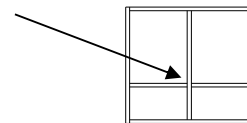
1piece mull



Can continue to stack with structural mullins as long as you follow guidelines below.

There are many different configurations that can be used in the Gerkin stack system. When choosing your configuration you must use the following guidelines.

1. The rails can not be crossed in a 1 frame configuration



2. Individual frames up to 96" tall can not exceed 48" wide.

3. Reference dimension must conform to the following:

	max size	min size roto	min size push / pull
5100 Awning	48"/36" x 30"	21" x 17 1/2"	12 1/2" x 17 1/2"
5200 Hopper	48"/36" x 30"	N/A	12 1/2" x 12 1/2"
5300 Casement	36" x 72"	15" x 21 3/4"	12 1/2" x 21 3/4"
5500 Fixed	48"/36" x 72"	N/A	12 1/2" x 12 1/2"

Ref. Dim.

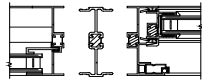
Ref. Dim.



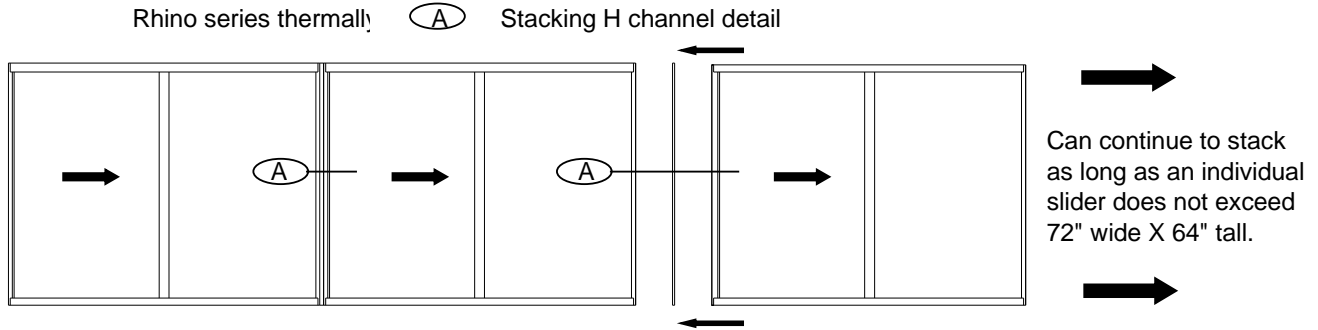
Side-stack configurations with stacking H channel Rhino sliding windows



Gerkin Aluminum thermally broken commercial windows. 2 3/8" frame depth. 5/8" overall insulated glass. Standard colors available clear anodized, dark bronze anodized, white painted or bronze painted. Custom colors are available upon request

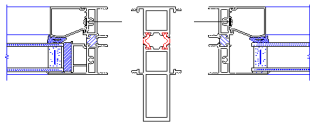


perimeter interior & exterior of H channel



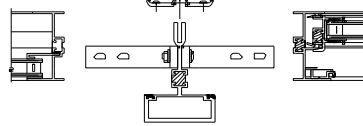
Side stack configurations with structural mullions Rhino sliding windows

Caulk full perimeter interior & exterior of structural mullion



1piece

(B) Struct stack detail

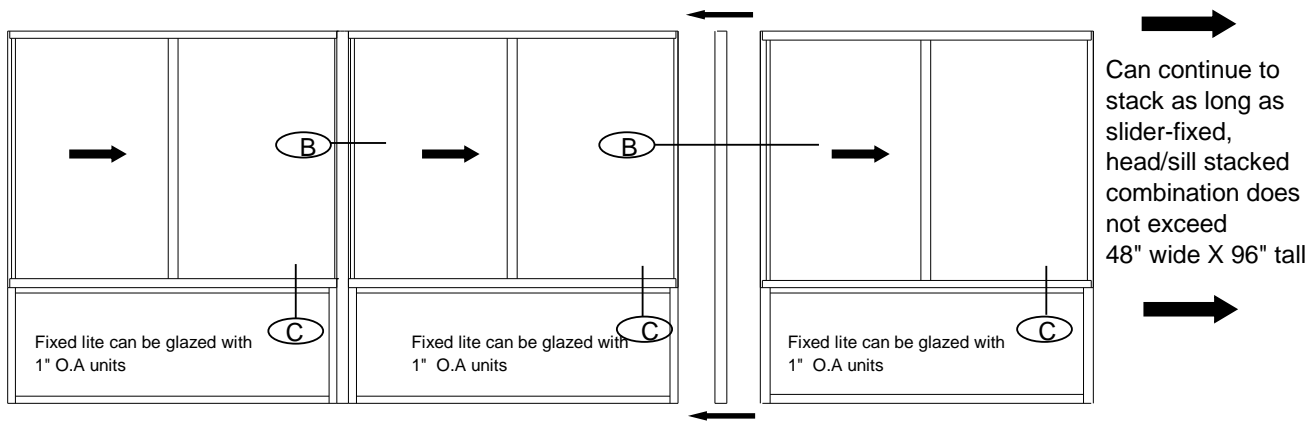


3piece

(B) Structural mullion detail



(C) Head stack detail



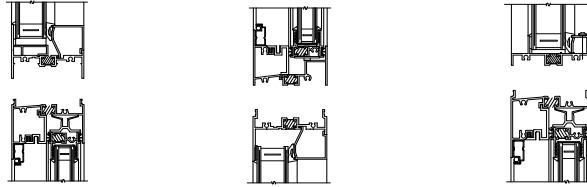


Head & sill stack configurations Rhino sliding windows

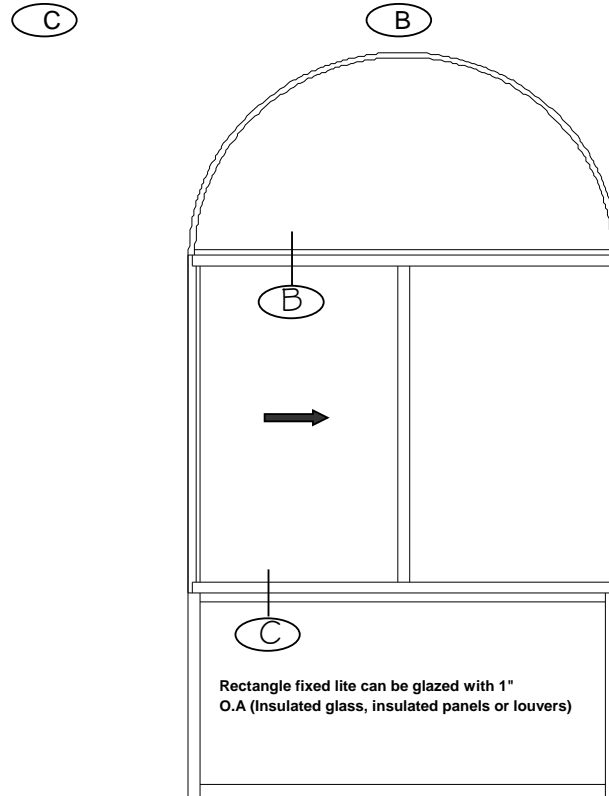
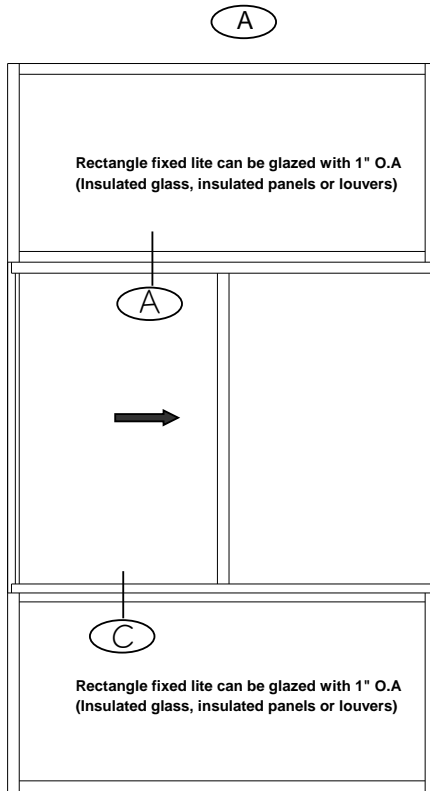


Gerkin Aluminum thermally broken commercial windows with 2 3/8" frame depth. 5/8" overall insulated glass. Standard colors available clear anodized, dark bronze anodized, white painted or bronze painted. Custom colors are available upon request.

Caulk full perimeter interior & exterior of stack rails



Head stack detail



Slider can not exceed 72" wide X 60" tall max.R.O
 Slider can not be below 18 1/2" wide X 12 1/2" tall min. R.O
 Transom can not exceed 72" wide X 36" tall max. R.O
 Transom can not be below 18 1/2" wide X 12 1/2" tall min. R.O
 Bottom fixed can not exceed 72" wide X 36" tall min. R.O
 Bottom fixed can not be below 18 1/2" wide X 12 1/2" tall min. R.O

Slider can not exceed 72" wide X 60" tall max.R.O
 Slider can not be below 36" wide X 12 1/2" tall min. R.O
 1/2 Round can not exceed 72" wide max. R.O
 1/2 Round can not be below 36" wide min. R.O
 Bottom fixed can not exceed 72" wide X 36" tall min. R.O
 Bottom fixed can not be below 18 1/2" wide X 12 1/2" tall min. R.O

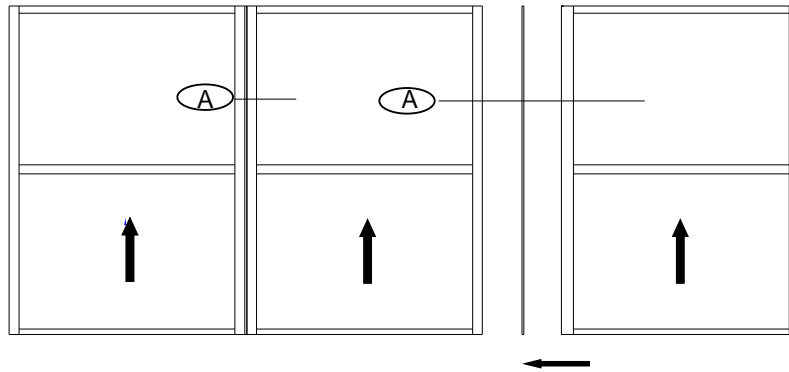
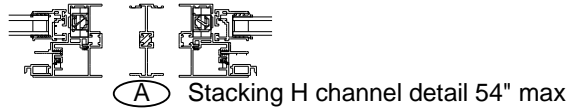


Side-stack configurations with stacking H channel Rhino singlehung windows



Gerkin Aluminum thermally broken commercial windows. 2 3/8" frame depth. 5/8" overall insulated glass. Standard colors available clear anodized, dark bronze anodized, white painted or bronze painted. Custom colors are available upon request.

Caulk full perimeter interior & exterior of H channel



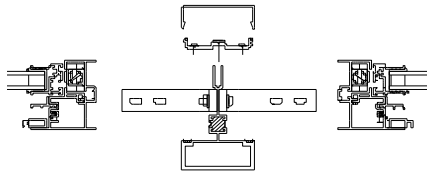
Can continue to stack as long as an individual singlehung does not exceed 48" wide X 64" tall.



Side stack configurations with structural mullions Rhino singlehung windows

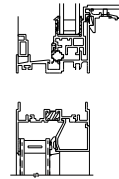
Rhino singlehung windows

Caulk full perimeter interior & exterior of structural mullion

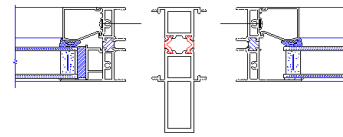


3 piece

(B) Structural mullion detail

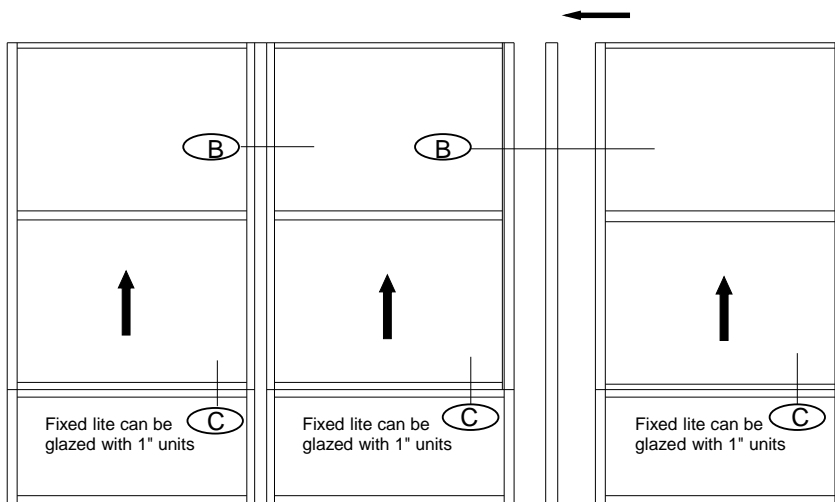


(C) Head stack detail



1 piece

(B) Structural stack detail



Can continue to stack as long as singlehung-fixed, head/sill stacked combination does not exceed 48" wide X 96" tall





Head & sill stack configurations

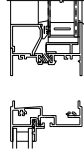
Rhino singlehung windows



Gerkin Aluminum thermally broken commercial windows with 2 3/8" frame depth. 5/8" overall insulated glass. Standard colors available clear anodized, dark bronze anodized, white painted or bronze painted. Custom colors are available upon request.

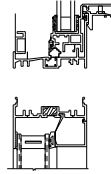
Caulk full perimeter interior & exterior of stack rails

Head stack detail



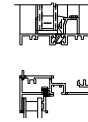
A

Head stack detail

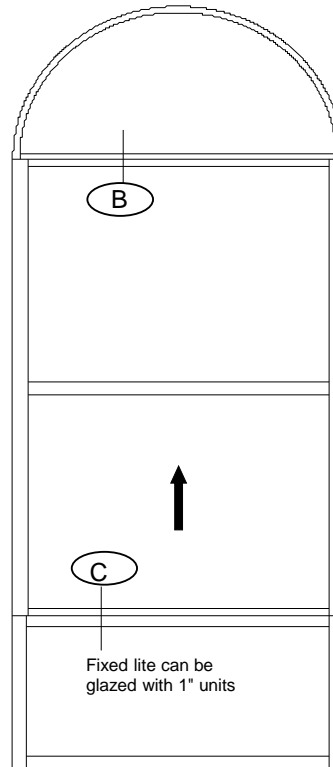
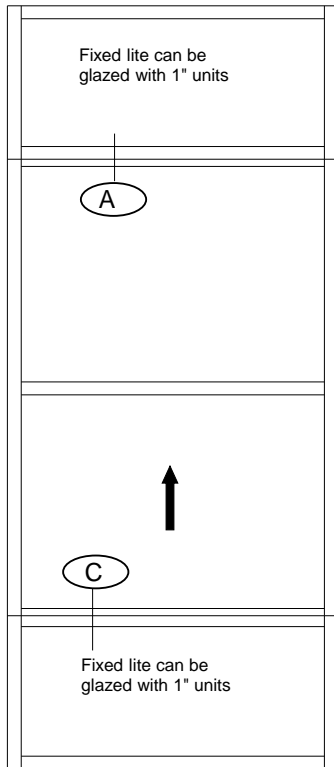


C

Head stack detail



B



Overall unit cannot exceed 48" x 108"

Singlehung can not exceed 48" wide X 72" tall max.R.O
 Singlehung can not be below 16 1/2" wide X 30" tall min. R.O
 Transom can not exceed 48" wide X 36" tall max. R.O
 Transom can not be below 18 1/2" wide X 12 1/2" tall min. R.O
 Bottom fixed can not exceed 48" wide X 36" tall min. R.O
 Bottom fixed can not be below 18 1/2" wide X 12 1/2" tall min. R.O

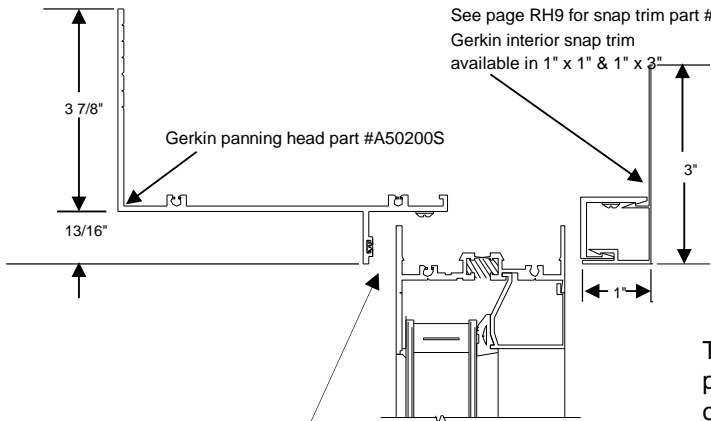
Singlehung can not exceed 48" wide X 72" tall max.R.O
 Singlehung can not be below 16 1/2" wide X 30" tall min. R.O
 1/2 Round can not exceed 48" wide max. R.O
 1/2 Round can not be below 24" wide min. R.O
 Bottom fixed can not exceed 48" wide X 36" tall min. R.O
 Bottom fixed can not be below 18 1/2" wide X 12 1/2" tall min. R.O



RHINO SERIES PANNING SYSTEM



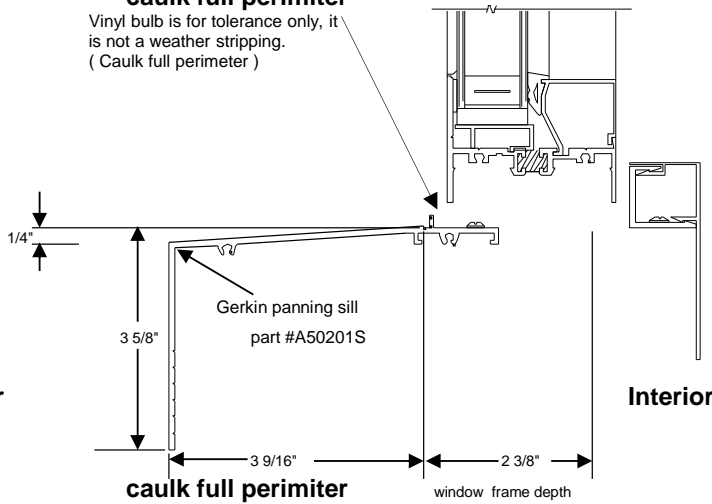
caulk full perimeter



The Gerkin panning system is ideal for retrofit projects where you can't remove existing frames or there is some irregularities in the opening. The panning system is designed to cover unsightly conditions. On some projects panning can save labor when replacing old inefficient unsightly windows with thermally broken energy efficient windows that have a new and clean look. When using the panning system check out our interior snap trims that can be adapted to many conditions and will give you a nice finished look both interior and exterior.

caulk full perimeter

Vinyl bulb is for tolerance only, it is not a weather stripping. (Caulk full perimeter)

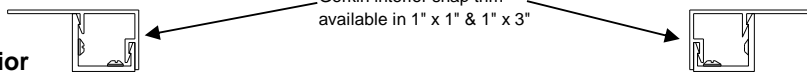


caulk full perimeter

window frame depth

Interior

Gerkin interior snap trim available in 1" x 1" & 1" x 3"



caulk full perimeter

vinyl bulb part #V50350BK

Vinyl bulb is for tolerance only, it is not a weather stripping. (Caulk full perimeter)

Gerkin panning jambs same as head

Gerkin panning jambs same as head

caulk full perimeter

caulk full perimeter

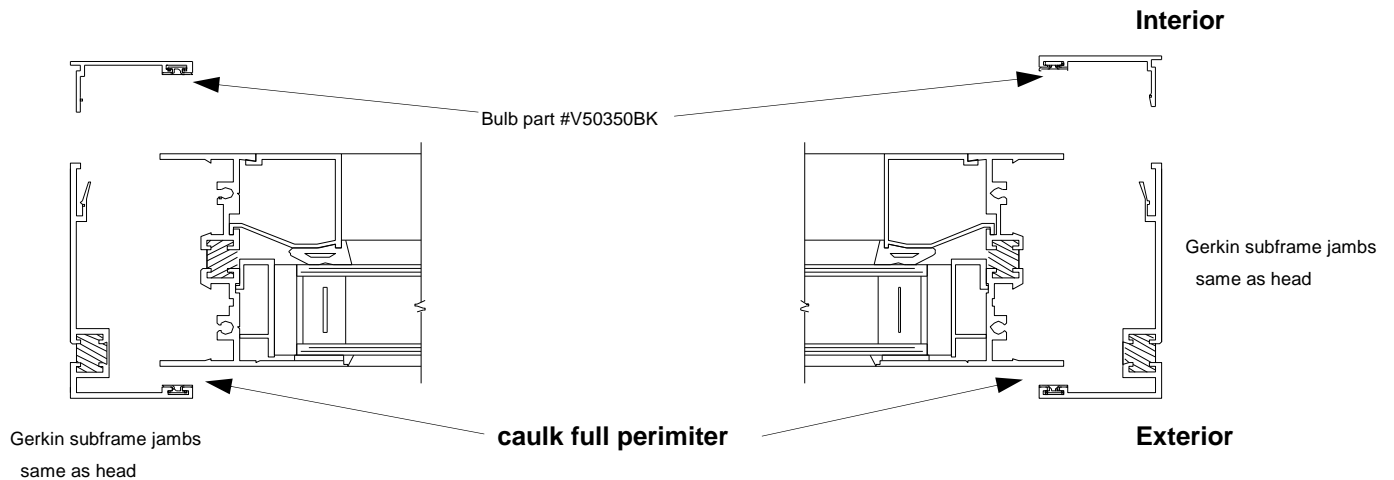
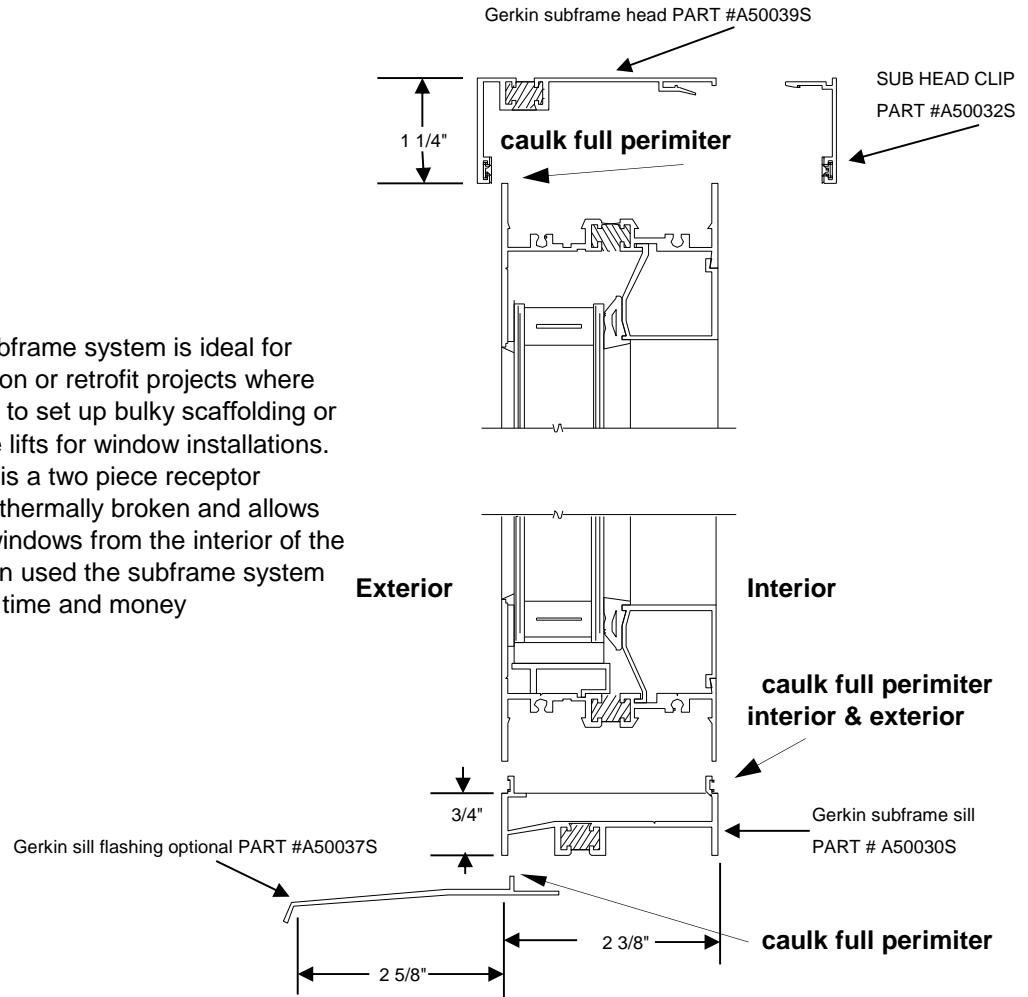
Exterior



RHINO SERIES SUBFRAME SYSTEM



The Gerkin subframe system is ideal for new construction or retrofit projects where you don't want to set up bulky scaffolding or rent expensive lifts for window installations. The subframe is a two piece receptor system that is thermally broken and allows you to install windows from the interior of the building. When used the subframe system can save both time and money

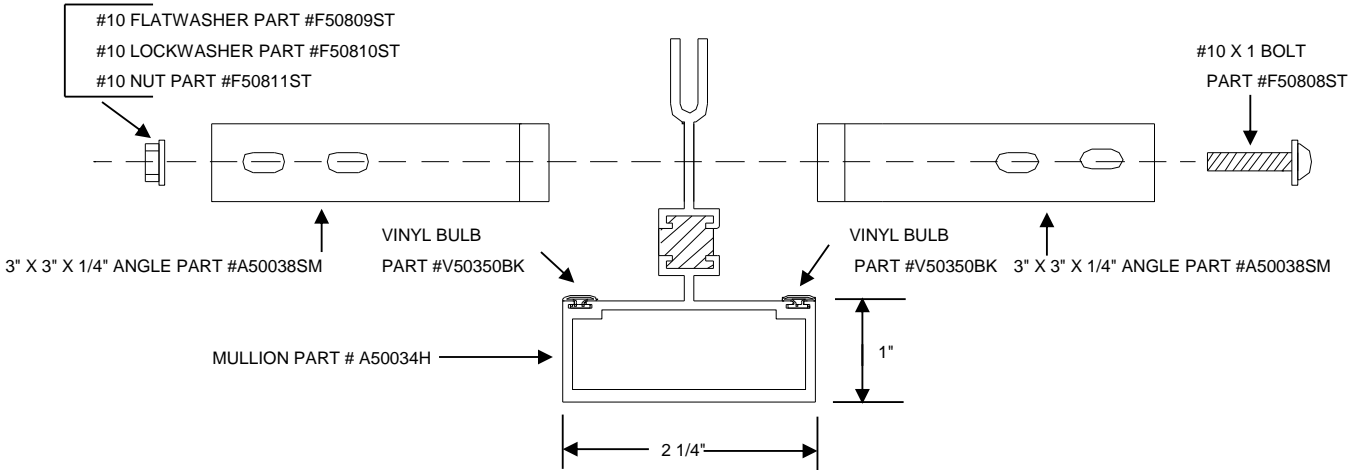
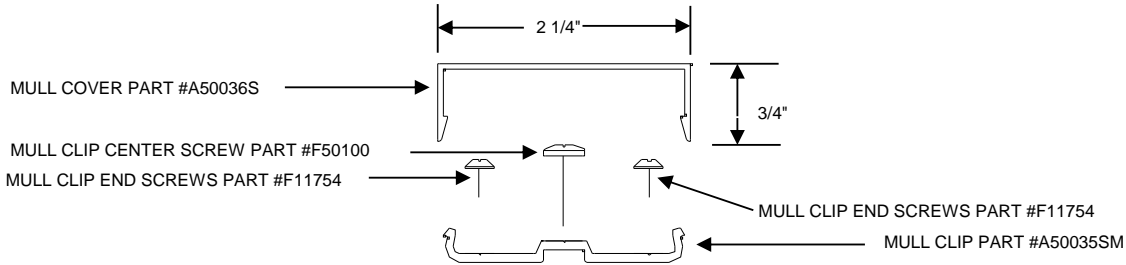




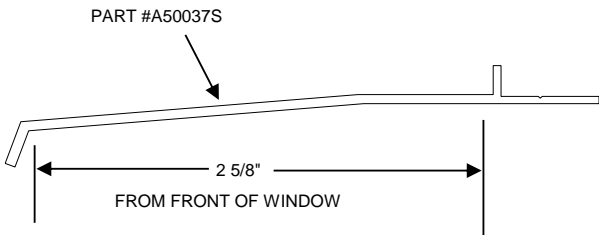
RHINO SERIES ACCESSORIES



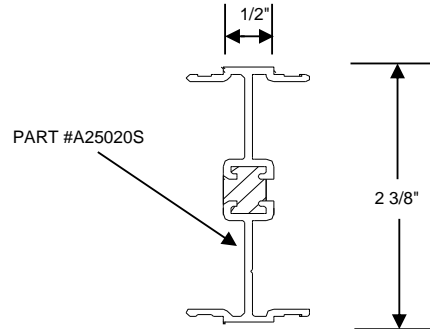
GERKIN STRUCTURAL MULLION



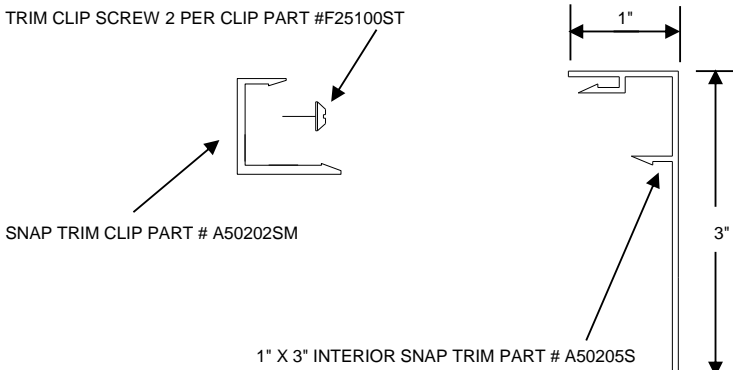
GERKIN SILL FLASHING



GERKIN STACKING H CHANNEL

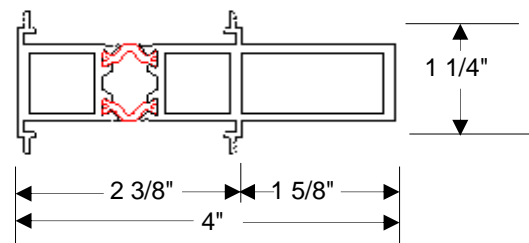


GERKIN 1" X 3" INTERIOR SNAP TRIM



GERKIN STRUCTURAL STACK

WHEN ORDERING SPECIFY IF FLUSH TO EXTERIOR OR INTERIOR





Gerkin Windows & Doors

P.O Box 3203

Sioux City IA. 51102

Phone: (402) 494-6000 (800) 475-5061

Fax: (402) 494-6765

Web site: www.gerkin.com E-Mail: gerkin@gerkin.com

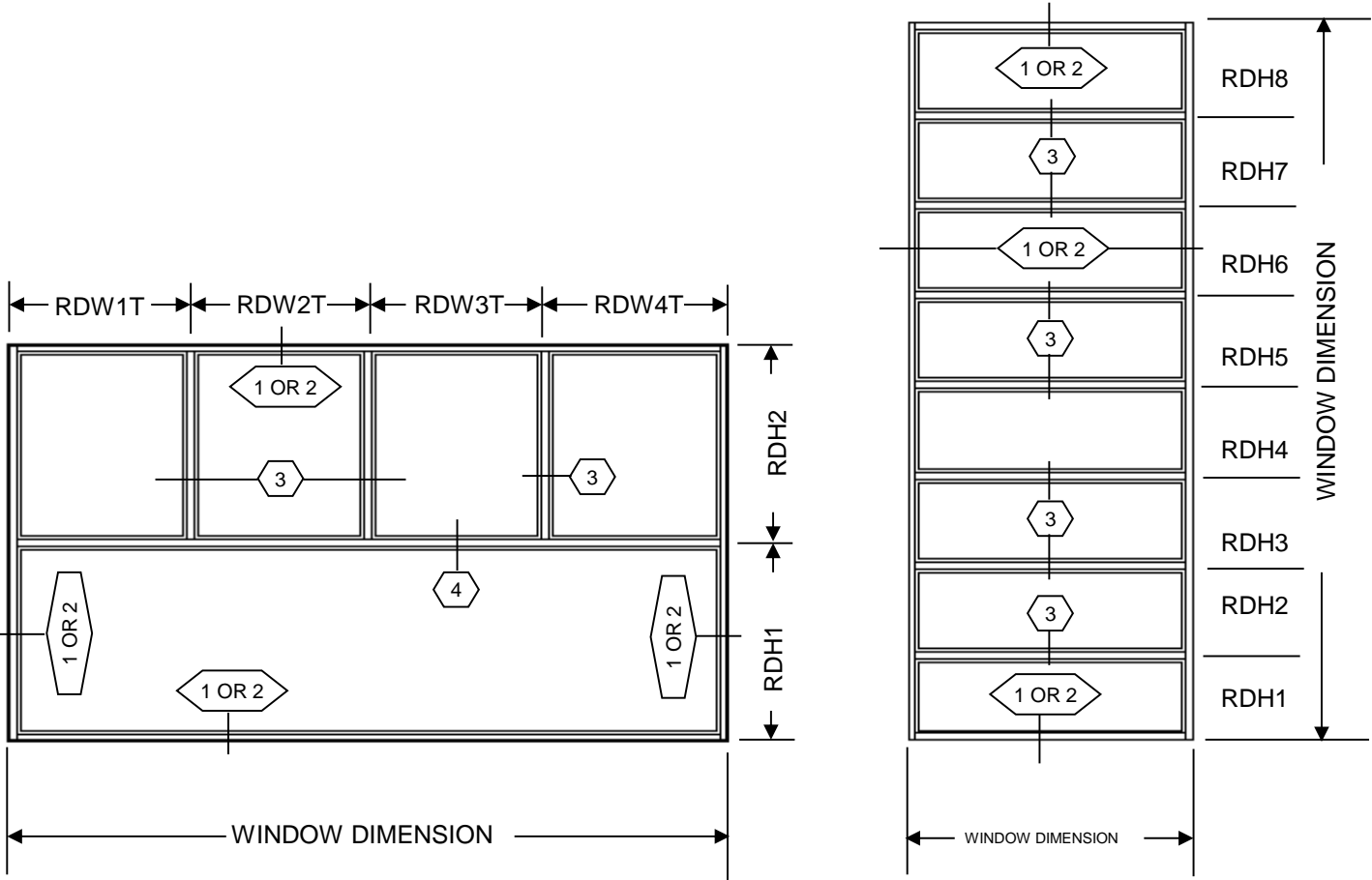
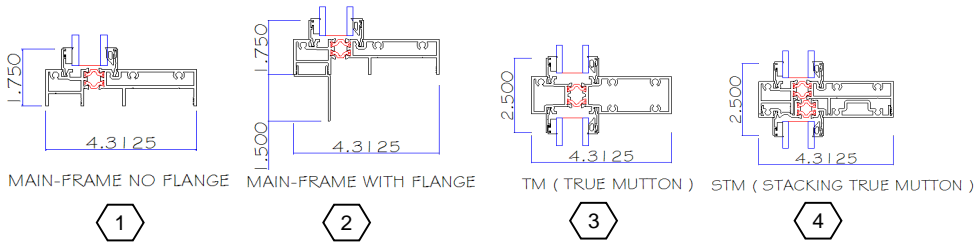


Rhino series thermally broken 4 5/16" aluminum windows Information book

- Page 58F-1 Sizing guidelines for stand-alone windows
- Page 58F-2 Sizing guidelines for multi-lite windows
- Page 58F-3 Sizing guidelines for stacking true-muntin rail
- Page 58F-4 Sizing guidelines for stacking main-frame
- Page 58F-5 Sizing guidelines for stacking vertical



GERKIN WINDOWS 5800 FIXED STAND ALONE WINDOWS



5800 series windows has optional factory applied flanges that can be ordered as 1" set back or flush exterior face

5800 windows can be ordered with factory installed operating vents (Awnings, Casements or Hopper units)

Gerkin also has other accessories available to help make installation easier. Some of the accessories are Panning, Sub-frame, Extruded sill flashing and Interior snap-trim

Guidelines

1-Lite windows can not exceed 60" x 99", 72" X 72" OR 48" x 120"

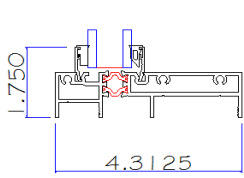
Multi lite windows can not exceed 60" x 99",48" x 120" OR 72" X 72"

Reference dimensions minimum 18"

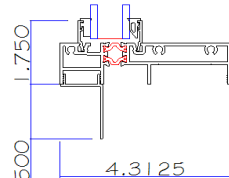
When windows are multiple lites tall, Horizontal dividers can not exceed 72" Wide X 60" tall



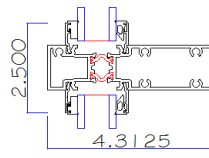
GERKIN WINDOWS 5800 FIXED ONE FRAME WINDOW WITH MULTIPLE CONFIGURATIONS



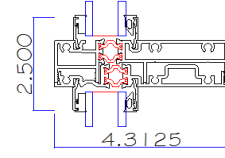
MAIN-FRAME NO FLANGE



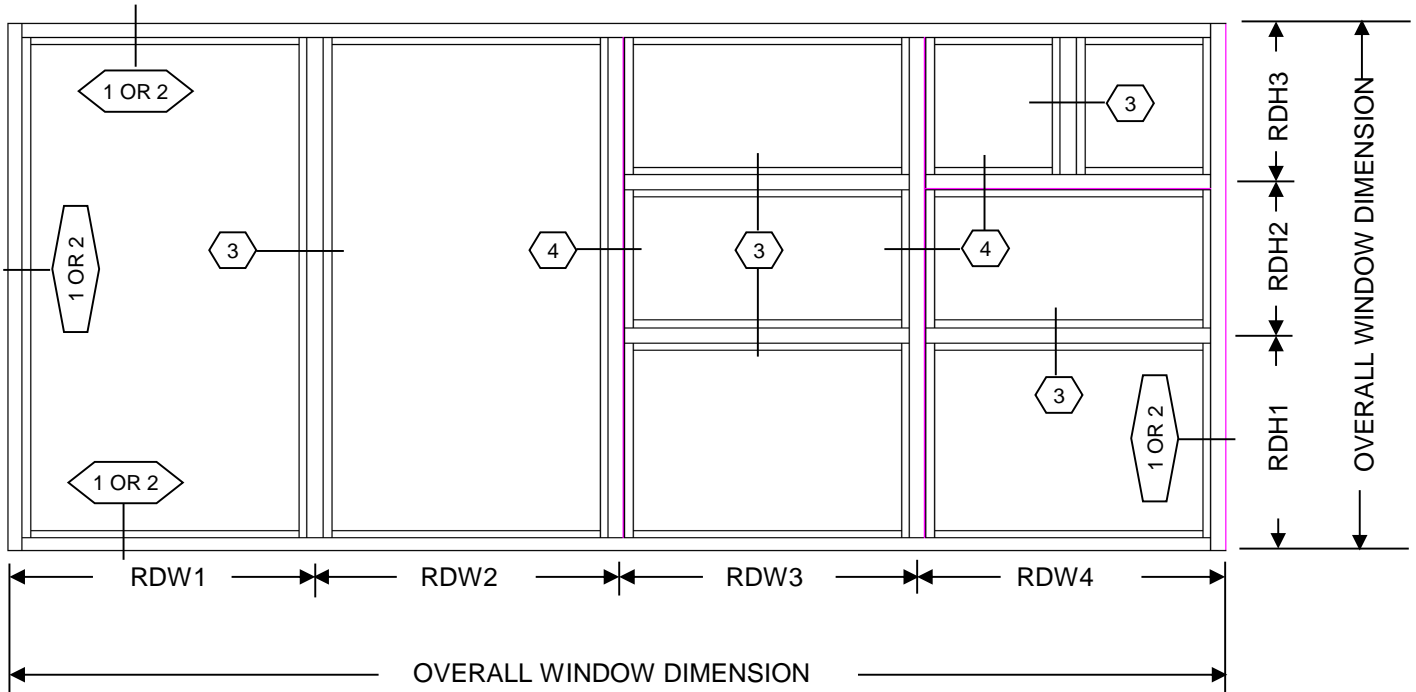
MAIN-FRAME WITH FLANGE



TM (TRUE MUTTON)



STM (STACKING TRUE MUTTON)



5800 series windows has optional factory applied flanges that can be ordered as 1" set back or flush exterior face

5800 windows can be ordered with factory installed operating vents (Awnings, Casements or Hopper units)

Gerkin also has other accessories available to help make installation easier. Some of the accessories are Panning, Sub-frame, Extruded sill flashing and Interior snap-trim

Guidelines

Reference dimension sizing can not exceed 60" x 99"

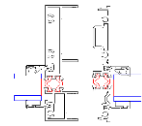
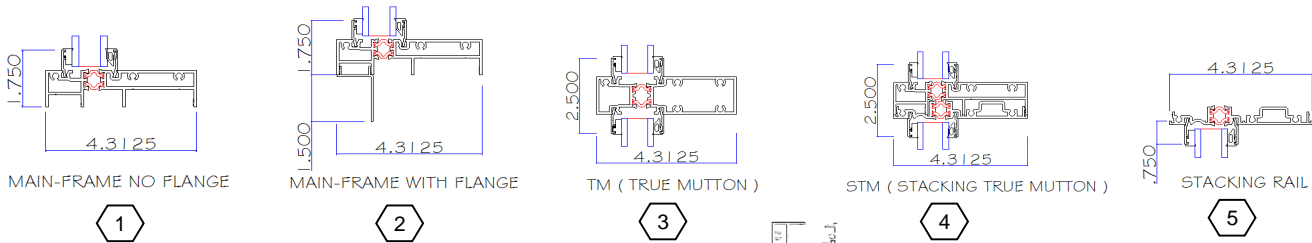
Reference dimensions minimum 18"

When windows are multiple lites tall, Horizontal dividers can not exceed 72" Wide X 60" tall

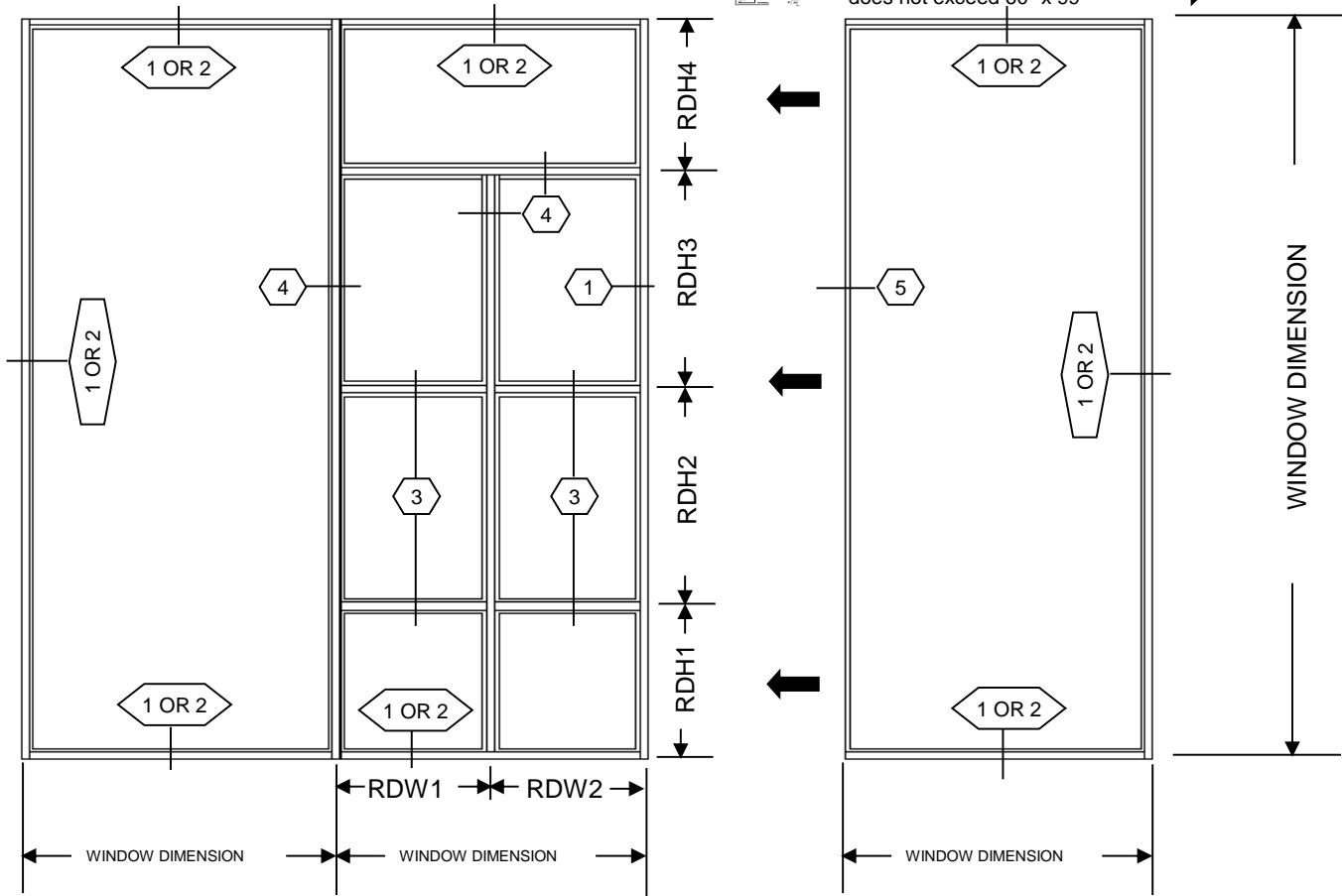
Maxinum overall window size 120" x 90"



GERKIN WINDOWS SIDE STACK 5800 FIXED WITH STACKING TRUE-MUNTIN RAIL



Due to expansion and contraction 40' max run
Can continue to stack as long as each window
does not exceed 60" x 99"



While the above window configuration could be built as 1 complete unit, The size and weight could make this unit hard to handle and install. Gerkin Windows 5800 with a stacking true mutton rail allows the end user to receive individual windows that are much easier to handle.

Once the 5800 units with the stacking true mutton are sealed and stacked together all the dividers within the opening match leaving a 2 1/2" sight line

5800 series windows has optional factory applied flanges that can be ordered as 1" set back or flush exterior face

5800 windows can be ordered with factory installed operating vents (Awnings, Casements or Hopper units)

Gerkin also has other accessories available to help make installation easier. Some of the accessories are Panning, Sub-frame, Extruded sill flashing and Interior snap-trim

Guidelines

Each individual window can not exceed 60" x 99"

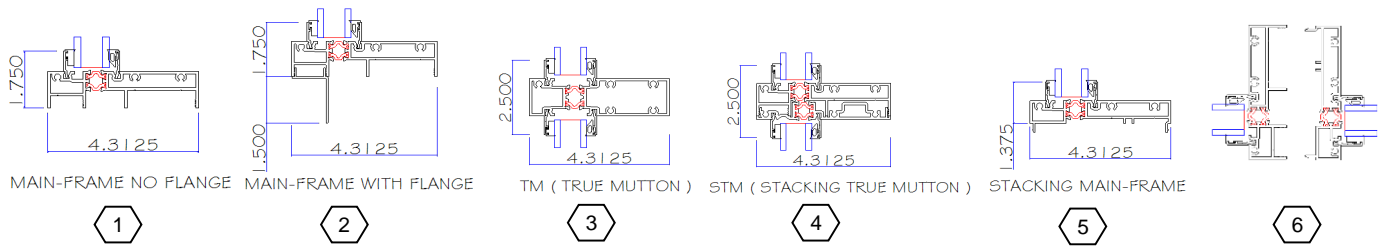
Reference dimensions minimum 18"

Factory mullered units can not exceed 120" x 90"

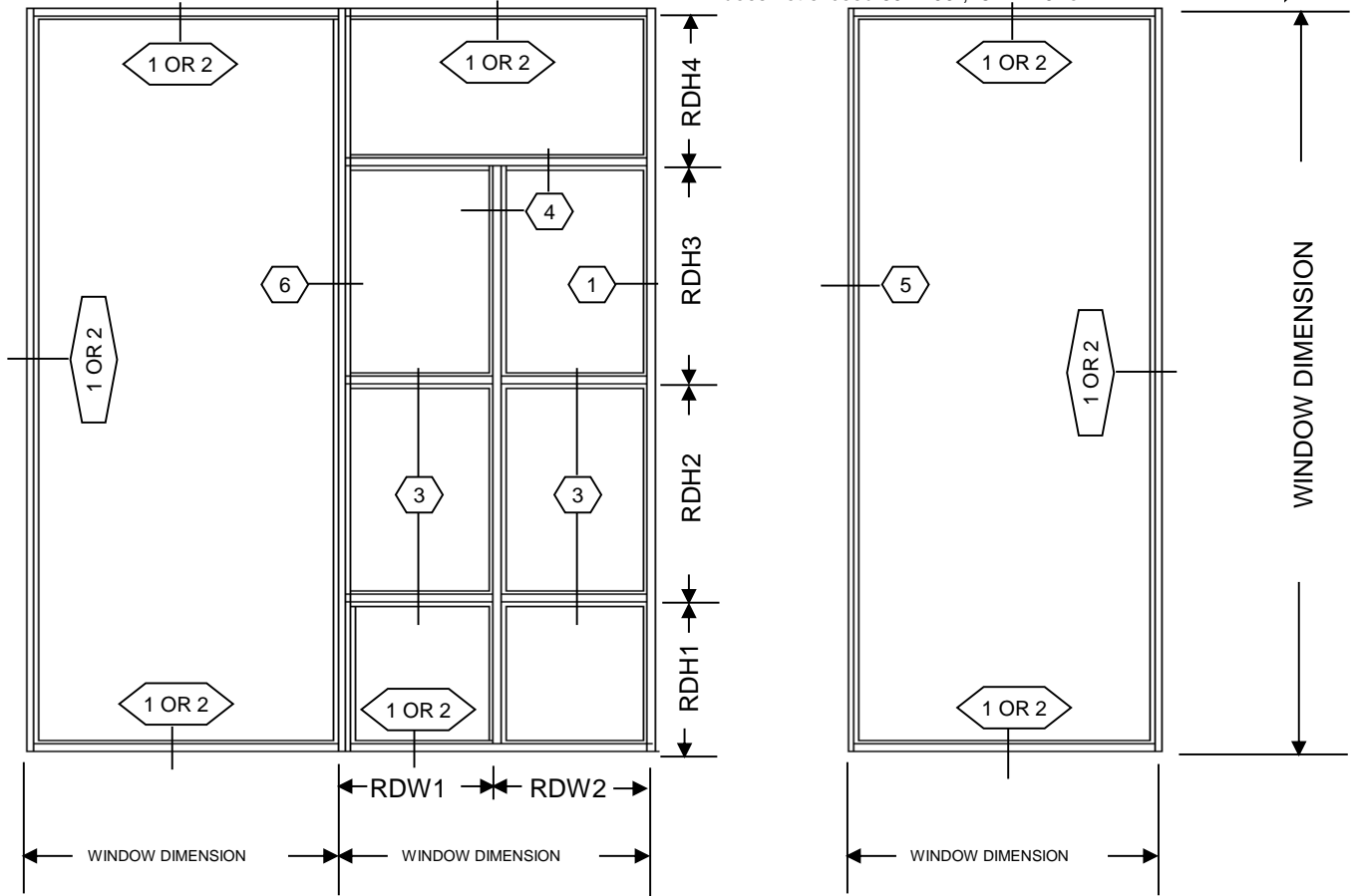
For more information contact Gerkin Windows & Doors (402) 494-6000 gerkin@gerkin.com



GERKIN WINDOWS SIDE STACK 5800 FIXED WITH STACKING MAIN-FRAME



Due to expansion and contraction 40' max run
 Can continue to stack as long as each window
 does not exceed 60" x 99", 48" x 120" or 72" x 72"



While the above window configuration could be built as 1 complete unit, The size and weight could make this unit hard to handle and install. Gerkin Windows 5800 with a stacking main-frame allows the end user to receive individual windows that are much easier to handle.

5800 series windows has optional factory applied flanges that can be ordered as 1" set back or flush exterior face

5800 windows can be ordered with factory installed operating vents (Awnings, Casements or Hopper units)

Gerkin also has other accessories available to help make installation easier. Some of the accessories are Panning, Sub-frame, Extruded sill flashing and Interior snap-trim

Guidelines

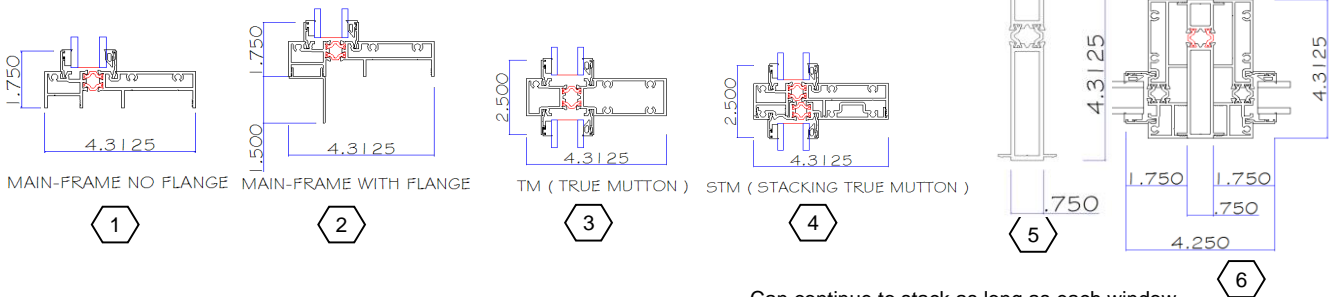
Each individual window can not exceed 60" x 99", 48" x 120" or 72" x 72"

Reference dimensions minimum 18"

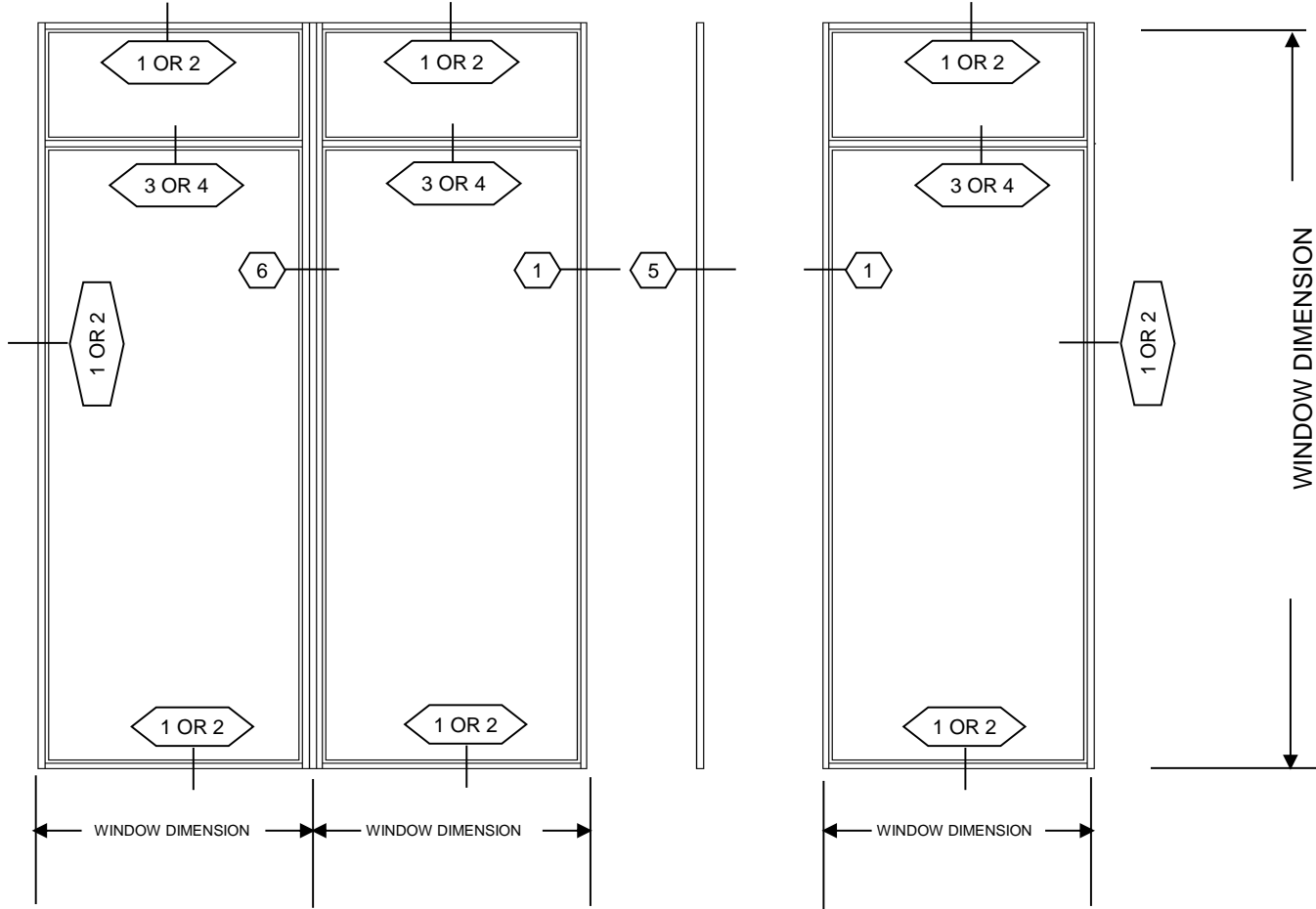
Factory mullered units can not exceed 120" x 90"



GERKIN WINDOWS GUIDELINE WHEN USING A58119 STRUCTURAL STACK RAIL



Can continue to stack as long as each window dimension does not exceed 48" x 144"



5800 series windows has optional factory applied flanges that can be ordered as 1" set back or flush exterior face

5800 windows can be ordered with factory installed operating vents (Awnings, Casements or Hopper units)

Gerkin also has other accessories available to help make installation easier. Some of the accessories are Panning, Sub-frame, Extruded sill flashing and Interior snap-trim

Guidelines

When windows are over 99" tall Width cannot exceed 48"

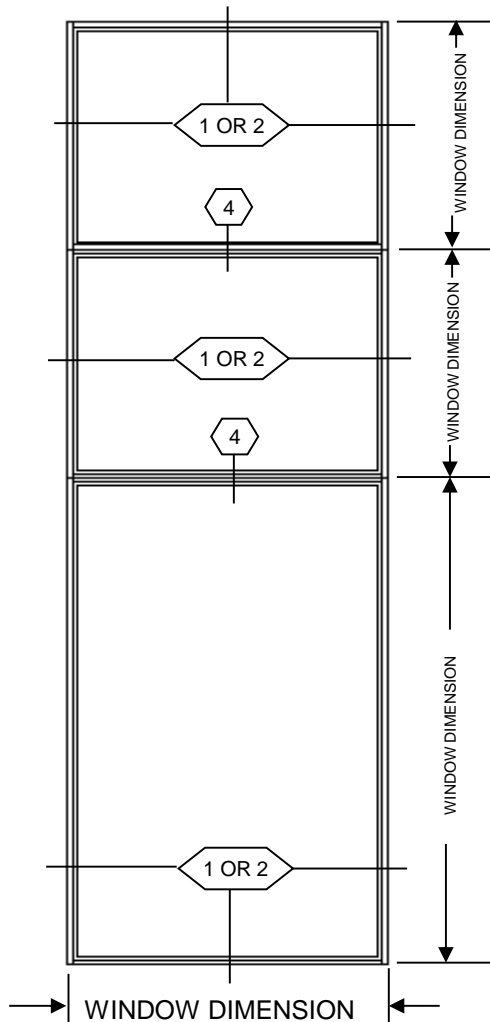
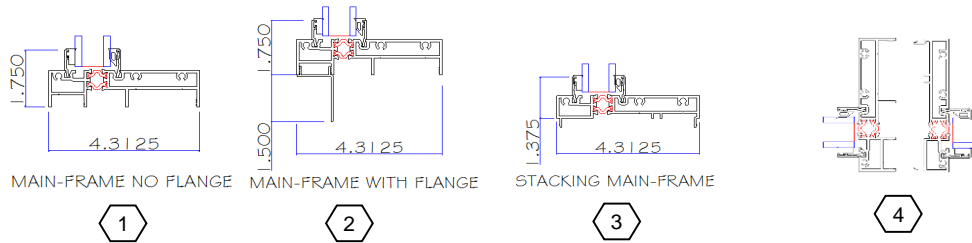
Note: multi-lite windows over 120" tall exceed AAMA certification

When stacking with the structural stack, individual lites cannot exceed 120" and overall height cannot exceed 144"

Reference dimensions minimum 18"



GERKIN WINDOWS HEAD STACK 5800 FIXED WITH STACKING MAIN-FRAME



5800 series windows has optional factory applied flanges that can be ordered as 1" set back or flush exterior face

5800 windows can be ordered with factory installed operating vents (Awnings, Casements or Hopper units)

Gerkin also has other accessories available to help make installation easier. Some of the accessories are Panning, Sub-frame, Extruded sill flashing and Interior snap-trim



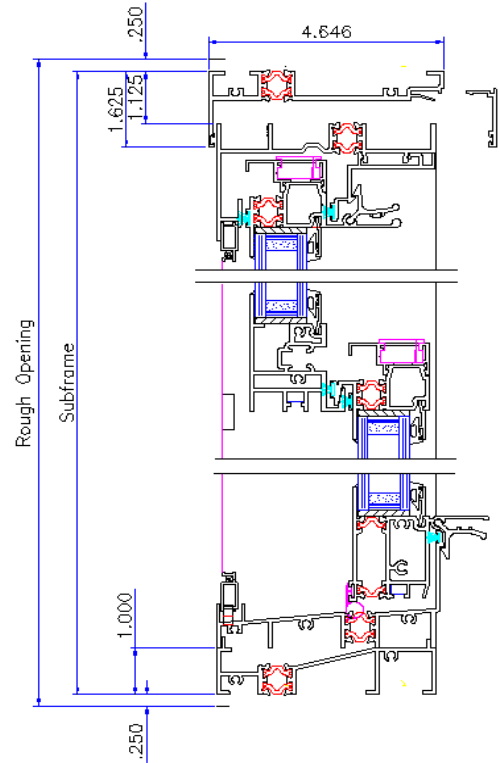
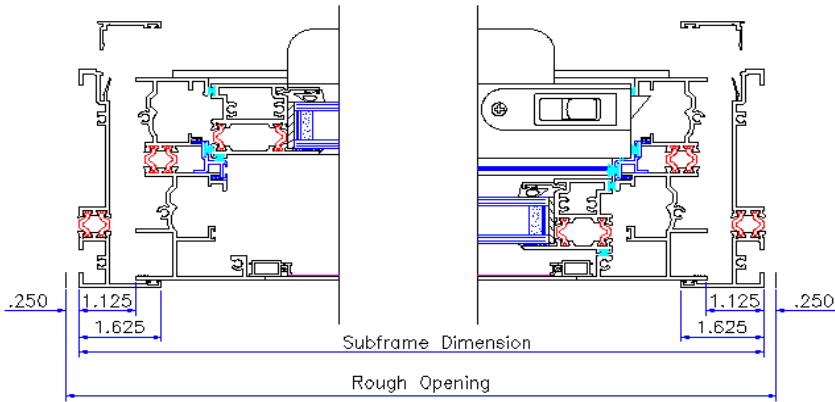
Guidelines

When head stacking overall height maximum is 16'

(Up to 48" wide) bottom windows max height is 120", windows stacking above can not exceed 72" tall

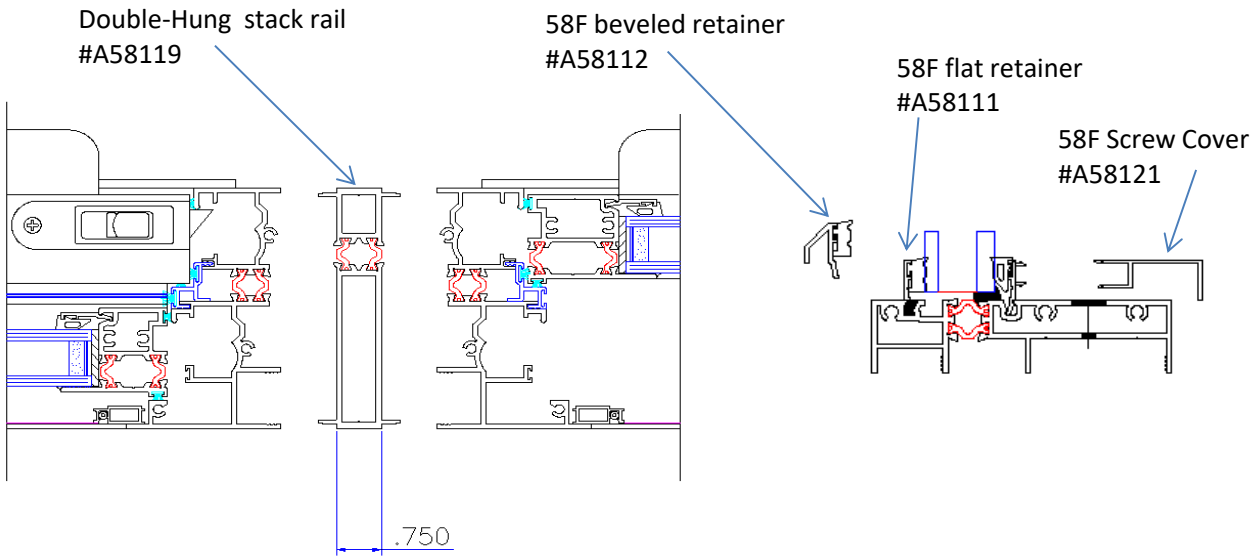
(Over 48" up to 60" wide) bottom windows max height is 99", windows stacking above can not exceed 72" tall

(Over 60" up to 72" wide) bottom windows max height is 60", windows stacking above can not exceed 60" tall



Gerkin Aluminum thermally broken Sub-frame system for 4 5/16" frames.

Other accessories that are compatible with 4 5/16" frames:
 1- Gerkin Panning system See Page RC-9
 2- Gerkin 1" X 3" Interior snap-trim See page RC-11
 2- Gerkin Sill flashing See page RC-11





DATE: _____

Bid To:	Contact:	Job Name:
Address:	City:	State: Zip:
City:	State:	Zip:
Phone:	Fax:	Project specs exist: YES <input type="checkbox"/> NO <input type="checkbox"/> Gerkin Windows specified: YES <input type="checkbox"/> NO <input type="checkbox"/>
Project start date:	Project finish date:	Bid Gerkin Windows as a voluntary alternate: YES <input type="checkbox"/> NO <input type="checkbox"/> <small>If yes windows will be per Gerkin windows specifications</small>
Project start date:	Project finish date:	Number of deliveries:
Project finish date:	Number of deliveries:	Building type: Number of stories:

Qty:	TAG:	WIDTH	HEIGHT
Model:		_____ X _____	
Color:		R.O <input type="checkbox"/>	EXACT: <input type="checkbox"/>
Operation:			
Glass type:			
Nail Fin: select one: YES <input type="checkbox"/> NO <input type="checkbox"/>	Subframe Needed: YES <input type="checkbox"/> "X" if needed	Panning Needed: YES <input type="checkbox"/> "X" if needed	
Additional Accessories:			
Notes:			
** If windows need to be quoted per project specs please include copy **			

WINDOW SKETCH FROM EXTERIOR

Qty:	TAG:	WIDTH	HEIGHT
Model:		_____ X _____	
Color:		R.O <input type="checkbox"/>	EXACT: <input type="checkbox"/>
Operation:			
Glass type:			
Nail Fin: select one: YES <input type="checkbox"/> NO <input type="checkbox"/>	Subframe Needed: YES <input type="checkbox"/> "X" if needed	Panning Needed: YES <input type="checkbox"/> "X" if needed	
Additional Accessories:			
Notes:			
** If windows need to be quoted per project specs please include copy **			

WINDOW SKETCH FROM EXTERIOR

Qty:	TAG:	WIDTH	HEIGHT
Model:		_____ X _____	
Color:		R.O <input type="checkbox"/>	EXACT: <input type="checkbox"/>
Operation:			
Glass type:			
Nail Fin: select one: YES <input type="checkbox"/> NO <input type="checkbox"/>	Subframe Needed: YES <input type="checkbox"/> "X" if needed	Panning Needed: YES <input type="checkbox"/> "X" if needed	
Additional Accessories:			
Notes:			
** If windows need to be quoted per project specs please include copy **			

WINDOW SKETCH FROM EXTERIOR



Gerkin Windows & Doors
P.O Box 3203
Sioux City IA. 51102
Phone: (402) 494-6000 (800) 475-5061

Rhino Quote Sheet

PAGE	OF
-------------	-----------

Fax: (402) 494-6765