

CS
COMFORT SERIES®



4400

VINYL SLIDING GLASS DOOR



 **GERKIN™**
WINDOWS & DOORS

800.475.5061 | gerkin.com

4400

VINYL SLIDING GLASS DOOR

DECADES OF PROVEN PERFORMANCE

The Comfort Series 4400 sliding glass door has even surprised those who are not easily impressed. We wanted a door that outshines all other sliding doors in weather tightness, ease of operation and long-term high performance. We got what we were looking for. This door features unbelievable strength against the elements with multiple areas of heavy internal aluminum reinforcements and multi-chambered fusion welded vinyl.



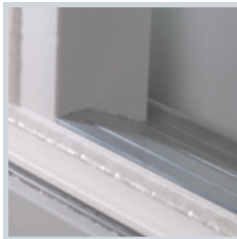
4400

VINYL SLIDING GLASS DOOR

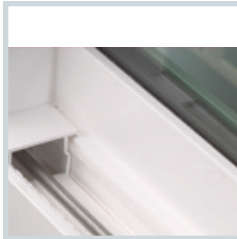
4400 SLIDING GLASS DOOR | DETAILS

**XO and OX design:**

We utilize an XO or OX design with the non-operating lite glazed directly into the fully fusion welded extruded UPVC 4 5/8" frame. This enhances air infiltration performance and cuts installation time substantially.

**Double Weatherstripping:**

Twin fin-seal weatherstripping provides a tight seal at the operator panel.

**Aluminum Sill Cap:**

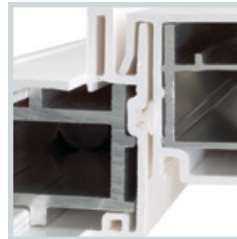
Our UPVC sill is enhanced with a heavy duty extruded aluminum cap. This makes the entire area more durable for years of maintenance free use.

**Hardware:**

Heavy-duty color matched hardware is standard. Brass, pewter and oil rubbed bronze hardware with keyed cylinder locks or 2-point locks are available options. Our sash operates on adjustable heavy-duty, stainless steel ball bearing rollers.

**Aluminum Stiffeners:**

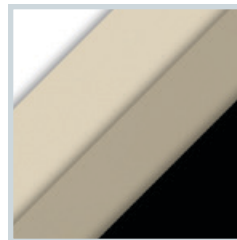
Our 4400 door houses a tubular aluminum-reinforced extrusion at the vertical meeting rail and vertical sash styles. We also have a galvanized stiffener in the mainframe head. This provides outstanding structural integrity and eliminates header sag, which is common in other vinyl doors.

**Full Interlock:**

Our 4400 is fully interlocked at the vertical meeting rail and weatherstripped with fin-seal. Its flared interlock design provides for a solid fit at the meeting rail.

**LoE³ Glass:**

The 4400 sliding glass door comes with 1" insulated clear or argon filled LoE³ high performance glass. Double LoE or laminate glass options are also available.

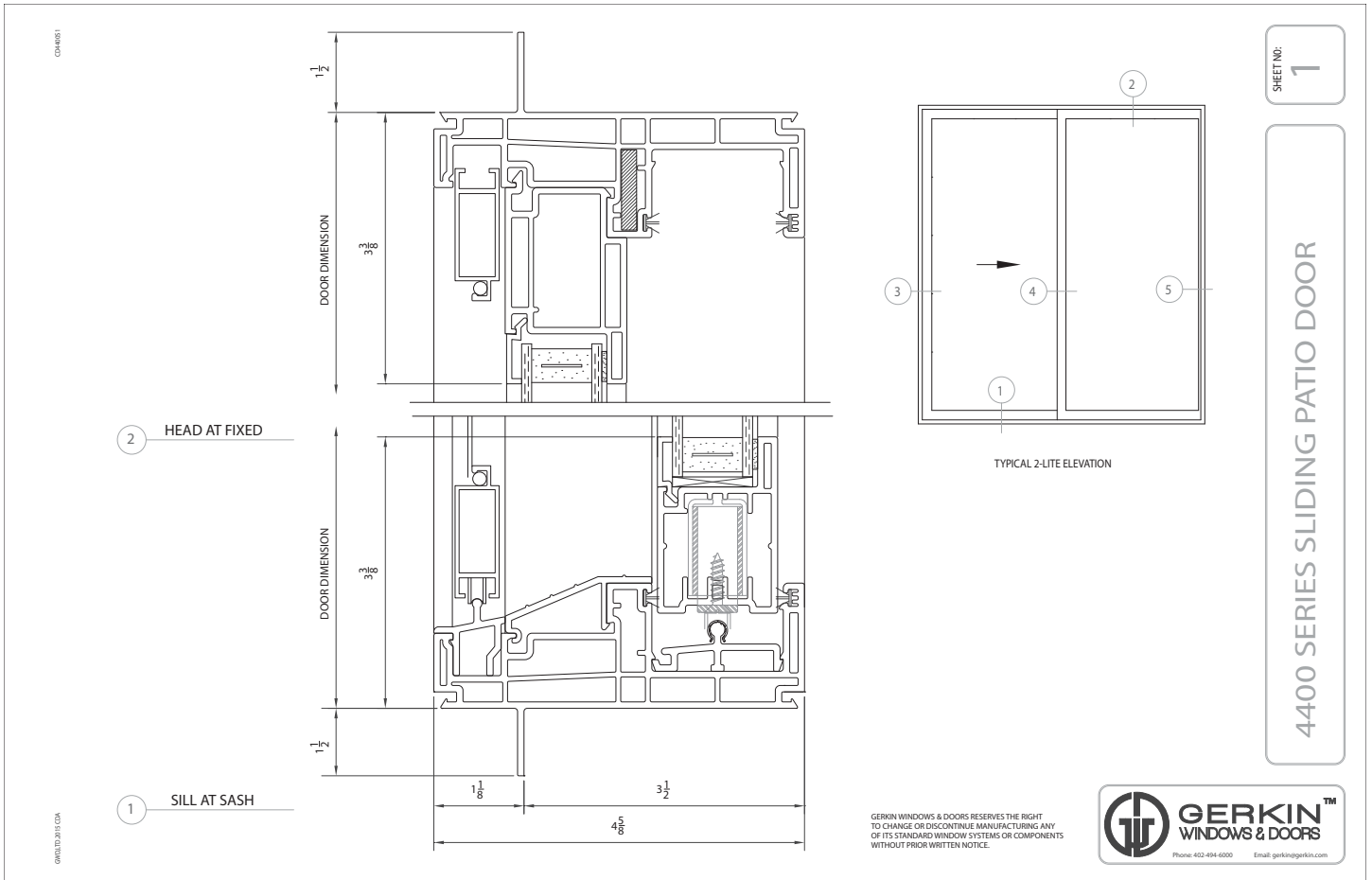
**Color Options:**

White
Tan
Sandstone
Midnight

4400

VINYL SLIDING GLASS DOOR

4400 SLIDING GLASS DOOR | DETAILS



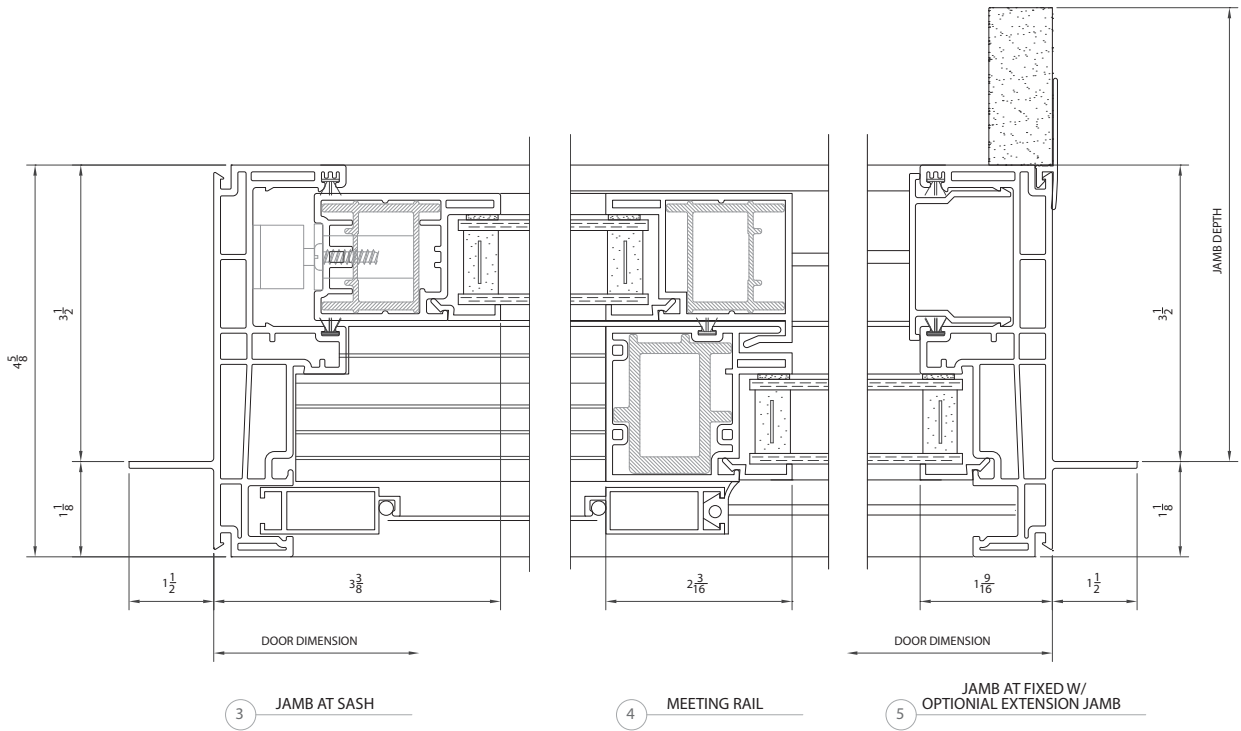
4400

VINYL SLIDING GLASS DOOR

4400 SLIDING GLASS DOOR | DETAILS

SHEET NO: 2

4400 SERIES SLIDING PATIO DOOR



4400

VINYL SLIDING GLASS DOOR



4400 SLIDING GLASS DOOR | TEST RESULTS

NFRC | TEST RESULTS

U-Value	.29
U-Value / Air Only*	.33
Solar Heat Gain Coefficient	.23
Visible Light Transmittance	.54
Condensation Resistance	58

AAMA | TEST RESULTS

Test Door | 2 Equal Lite 95-1/2" X 95-1/2"

Air Infiltration	.05 cfm/sq.ft.
Water	4.5 psf
Structural	45 psf
Indoor/Outdoor Sound Transmission Class	28
Sound Transmission Class (w/ 1/4 LAM X 1/8 A)	34
AAMA Rating	LC-PG30-SD

*U-Values for our windows with 1/8" 366 LoE³ glass, air only, 1/8" clear glass, no muntins or argon in the air space.

Thermal Value w/ 1" OA 1/8" 366/Argon/ 1/8" Clear - No Muntins

Tested and Certified to AAMA/WDMA/CSA 101/1.S.2/A440-05 & A440-08 U-Value/SHGC/VT/CRF Tested to NFRC 100/200/500



800.475.5061 | gerkin.com