

# 5100

ALUMINUM AWNING WINDOW



Copyright – OHASHI Design Studio



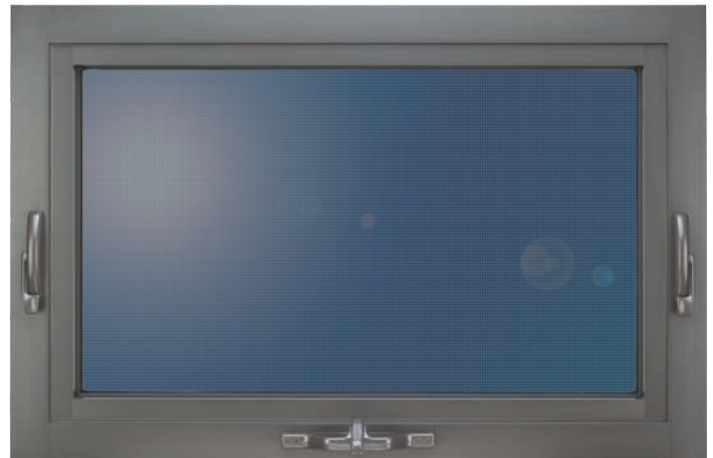
800.475.5061 | [gerkin.com](http://gerkin.com)

# 5100

## ALUMINUM AWNING WINDOW

### DECADES OF PROVEN PERFORMANCE

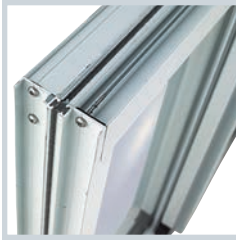
We have been featured in many LEED certified projects since all Rhino windows have shown strong performance results through NFRC testing. The 5100 awning windows have been popular for high-end condo projects as well as many municipal and office buildings. Our strength is in the ability to perform at a very high level in air infiltration, water resistance, and thermal performance. One of the key options we offer is factory mulling for combination windows such as hopper, awning, casement, and fixed windows. This option speeds up installation time and reduces field installation errors.



# 5100

## ALUMINUM AWNING WINDOW

### 5100 AWNING | DETAILS



**2 3/8" Thermally Broken Frame Depth:**  
We use a thermally broken frame and sash for improved thermal efficiency.



**Reinforced Power Crimped Sash Corners:**  
All sash corners are reinforced with two engineered corner keys which are hydraulically crimped, creating a corner built to last for years of trouble free operation.



**Sash Overlaps Frame:**  
Gerkin provides two compression seals on every sash and overlaps the frame of the window with one of the seals. This design allows Gerkin to have one of the tightest windows available.



**Friction Hinge:**  
These hinges will provide easy operation and tension adjustments. Washable hinges are available for roto operation or push/pull manual operation.



**Truth Roto Operators:**  
We have eliminated the complaints of hard operating awnings by offering extra cranking power and a low gear for smooth, trouble free operation.



**Multi-Point Progressive Lock:**  
Truth maxim multi-point progressive system is very forgiving with a wide operating tolerance. This lock provides an incredibly tight seal.



**Extruded Screen Frames:**  
We use extrusions on all Rhino screen frames instead of lightweight roll form aluminum. Extruded screens are much more durable and save money in replacement costs.



**Insulated Glass:**  
Overall glass thickness is 1". We offer several stocked glass options as well as numerous special order options.

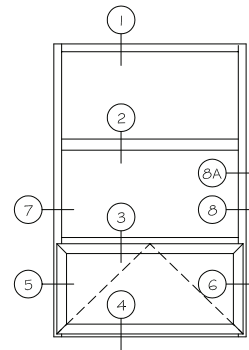
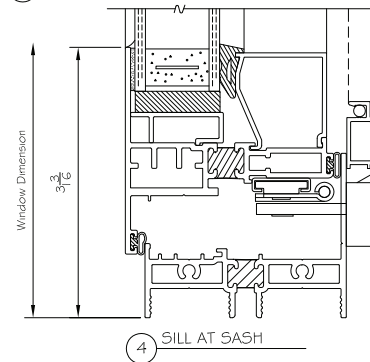
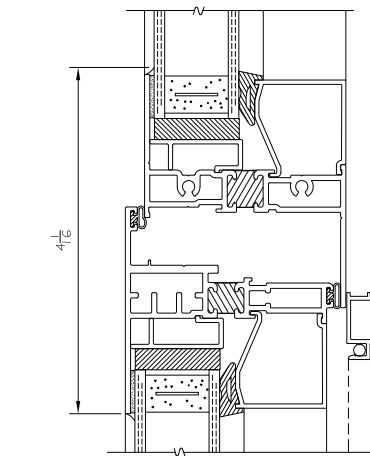
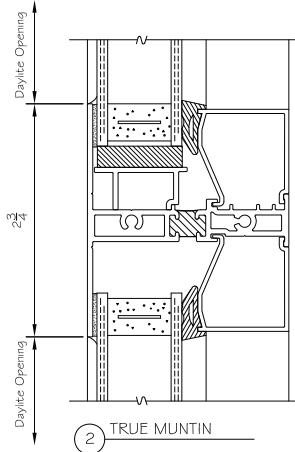
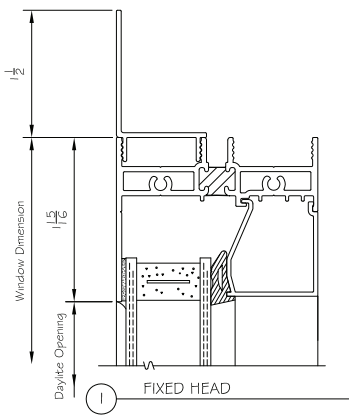
# 5100

## ALUMINUM AWNING WINDOW

### 5100 AWNING | DETAILS

CS0100051

06/11/2015, 03A



GERKIN WINDOWS & DOORS RESERVES THE RIGHT TO CHANGE OR DISCONTINUE MANUFACTURING ANY OF ITS STANDARD WINDOW SYSTEMS OR COMPONENTS WITHOUT PRIOR WRITTEN NOTICE.



SHEET NO:

1

5100 SERIES PROJECT-OUT AWNING WINDOW

# 5100

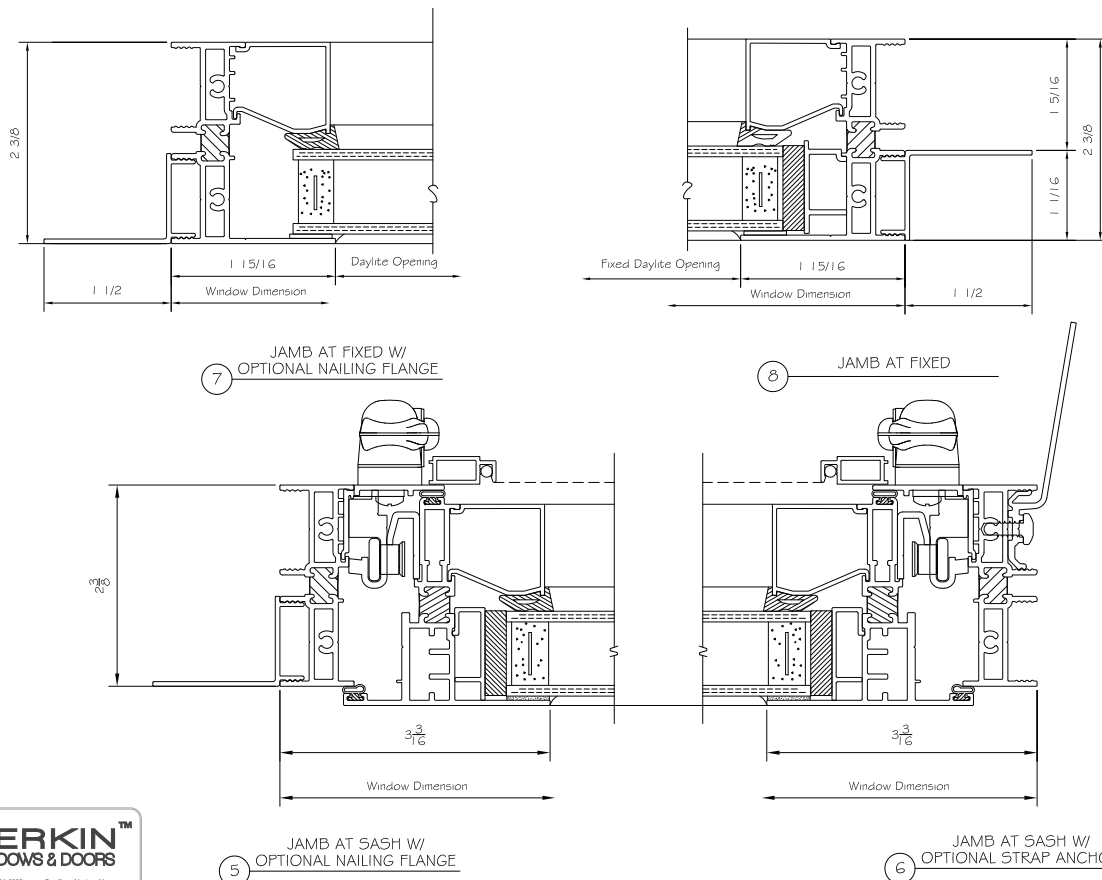
## ALUMINUM AWNING WINDOW

### 5100 AWNING | DETAILS

SHEET NO:

2

5100 SERIES PROJECT-OUT AWNING WINDOW



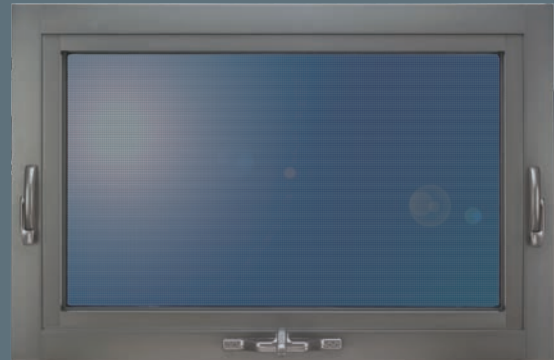
001/002

001/002



# 5100

## ALUMINUM AWNING WINDOW



### 5100 AWNING | TEST RESULTS

#### NFRC | TEST RESULTS

U-Value w/LoÉ³/Argon	.49
Solar Heat Gain Coefficient	.20
Visible Transmittance	.42
Condensation Resistance	37
U-Value Air Only*	.52

#### AAMA | TEST RESULTS

##### Test Window | 49" x 72" Vert. 2-Lite

Class	CW-PG60-AP
Air Infiltration	.01 cfm/sq.ft.
Water	9.00 psf
Structural Wind Load	90.0 psf
Indoor/Outdoor Sound Transmission Class	28
Sound Transmission Class (w/ 1/4 LAM X 1/8 A)	36

#### AAMA | TEST RESULTS

##### Test Window | 61" x 68" Vert. 2-Lite

Class	CW-PG55-AP
Air Infiltration	.01 cfm/sq.ft.
Water	8.25 psf
Structural Wind Load	82.5 psf
Indoor/Outdoor Sound Transmission Class	28
Sound Transmission Class (w/ 1/4 LAM X 1/8 A)	36

\*U-Values for our windows with 1/8" 366 LoÉ³ glass, air only, 1/8" clear glass, no muntins or argon in the air space.

Tested and Certified to AAMA/WDMA/CSA 101/I.S.2 A440-08  
 \*U Values and CRF Values, tested with 1" insulating glass w/LoÉ³  
 U-Value/SHGC/VT/CRF Tested to NFRC 100/200/500



#### Color Options:

- White
- Bronze
- Clear Anodized
- Dark Bronze Anodized



800.475.5061 | gerkin.com